

CITY RESILIENCE PROGRAM



City
Resilience
Program

World Bank | GFDRR

A MULTIDISCIPLINARY AND INNOVATIVE APPROACH

At the beginning of the 20th century, 14% of the world's population lived in cities. Today, that number has grown to 50%, and is expected to reach 70% by 2050. This concentration comes with significant challenges, especially in the context of a changing climate. Poorer populations are particularly vulnerable, as they often inhabit more hazard-prone places and lack the means to recover from economic or environmental shocks and stresses. These challenges will only continue to grow unless urgent action is taken.

Established in June 2017, the City Resilience Program (CRP) – a partnership between the **World Bank** and the **Global Facility for Disaster Reduction and Recovery (GFDRR)** – is a multi-donor initiative aimed at increasing financing for urban resilience.

The CRP's vision is to build resilient cities with the capacity to deal with disasters and climate change, enabling them to save lives, reduce losses and unlock their economic and social potential.

To pursue this vision, the CRP is organized around three strategic pillars:

Planning for Resilience

Cities have increased access to tools and technical support to effectively plan for resilience



Finance for Resilience

Cities have increased access to multiple sources of financing to ensure that more investments in resilience come to fruition



Partnership for Resilience

Cities can leverage global partnerships to support their resilience objectives



ACHIEVEMENTS: AN AMBITIOUS START

92 CITIES



ENGAGED WITH
THE PROGRAM

OVER **50** COUNTRIES

2

FINANCIAL SOLUTIONS
CONFERENCE



1

RESILIENCE INVESTMENT
PLANNING WORKSHOP



72

RAPID CAPITAL ASSESSMENTS

41

CITY SCANS



24

CITIES RECEIVED FINANCING/
ADVISORY SUPPORT



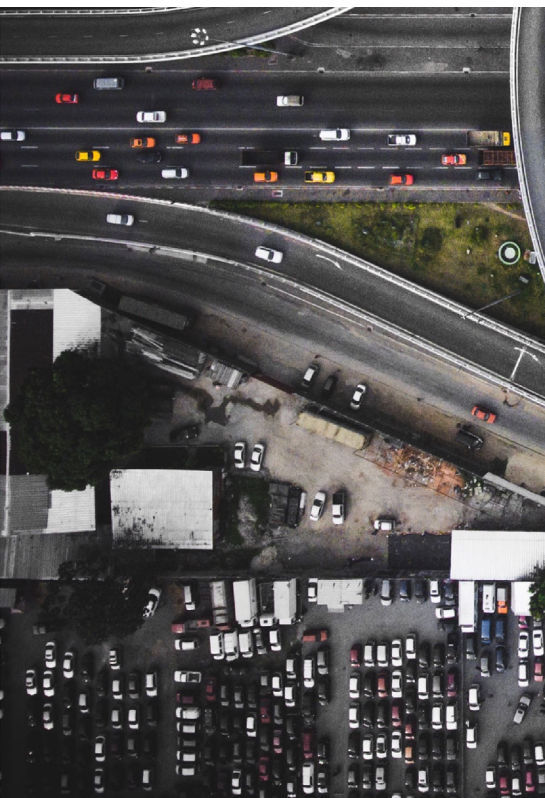
7

CITIES RECEIVED
OPERATIONAL/PLANNING
SUPPORT

Results till 2019

In Focus: City Scan

One of CRP's core products is the City Scan, which uses spatial data to help cities visualize the interplay of climate and infrastructural challenges they face. Substantial demographic growth, recurrent floods, and extensive waste management problems can overlap to create overwhelming difficulties in an urban area. The City Scan identifies these obstacles and enables decision-makers at the city-level and World Bank teams to work towards resolving them.



Abidjan

Like many major African cities, Abidjan is experiencing rapid urbanization, while simultaneously facing recurrent floods. The CRP started supporting Abidjan with the preparation of a **City Scan** as part of its **Resilience Investment Planning workshop**. The City Scan provided an overview of the city's economic, natural and built environment aspects, highlighting its key challenges in building resilience. It identified poor waste management and an inadequate drainage infrastructure as aggravating factors of flooding. CRP is currently performing **financial and economic analysis** of a potential **Public-Private Partnership (PPP) for solid waste management**, including the construction and operation of a new engineered landfill to service the eastern and northern sections of the Greater Abidjan area. This study provides the Government of Ivory Coast and Abidjan's District authorities with a financial and regulatory assessment of the waste management sector and analysis of PPP options for solid waste operations and the newly planned landfill facilities.



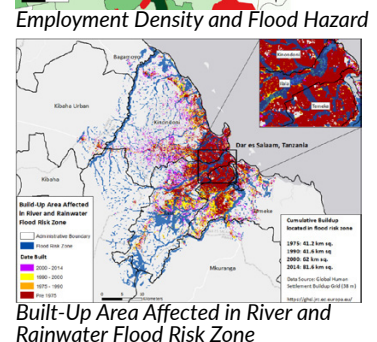
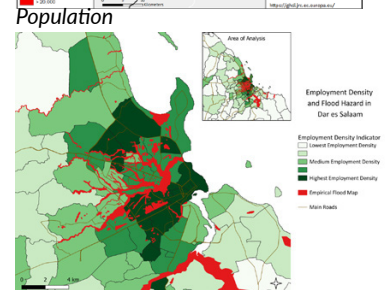
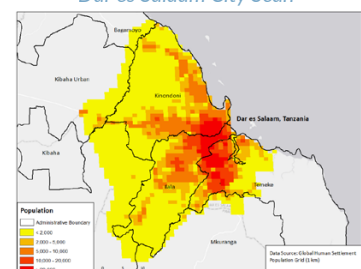
ZOOM IN: ADDRESSING CITY CHALLENGES

Dar es Salaam

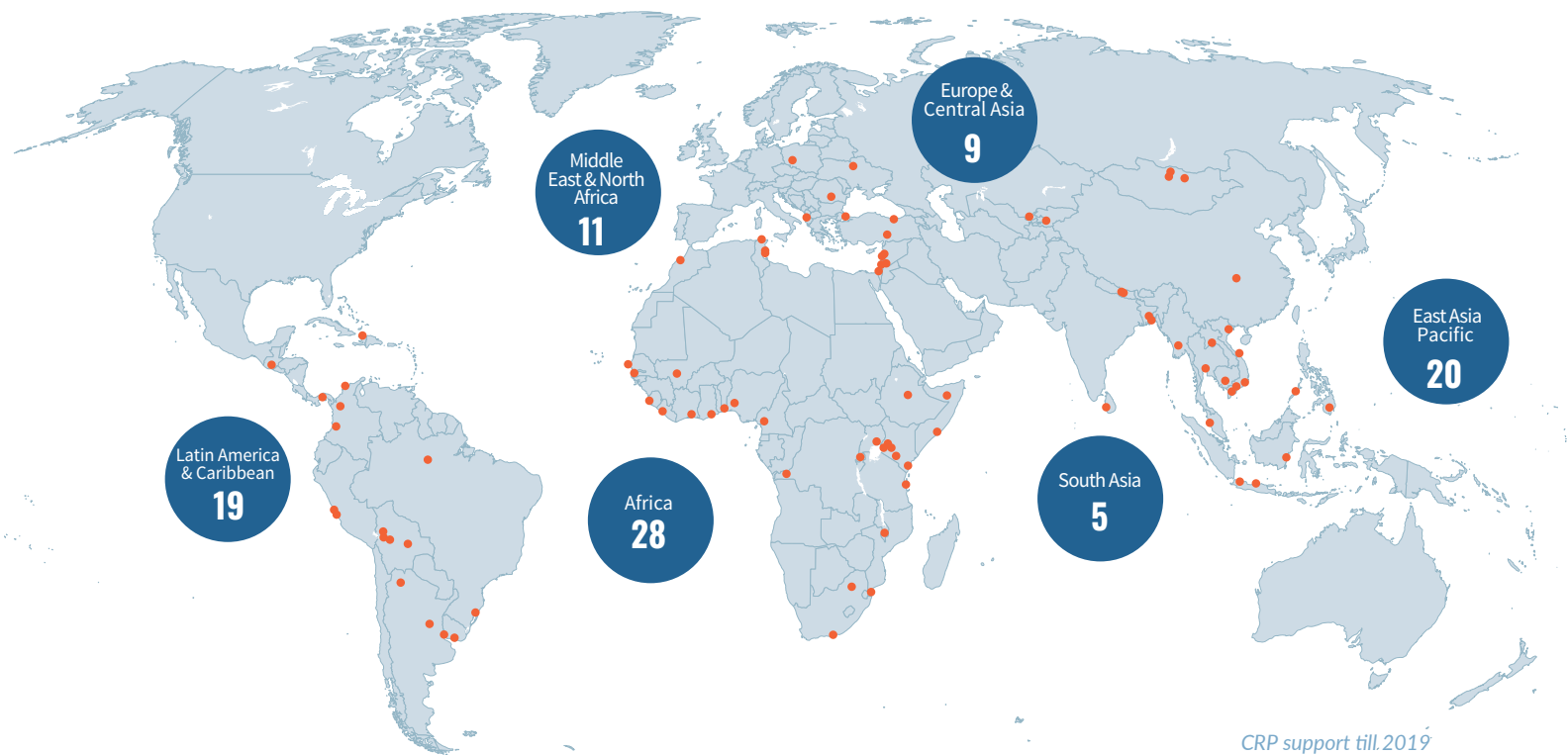
With an estimated 5.9 million people, Dar es Salaam is one of Africa's fastest growing cities. An estimated 70-80% of residents live in unplanned settlements, and many of these in the **Msimbazi basin**. Dar es Salaam's **City Scan** provided a visual overview of the city's vulnerabilities, including the exposure of its assets to **flooding and sea level rise**, giving decision makers a better understanding of the challenges they face.

The Msimbazi basin, home to 1.6 million people, is where the city's most severe flooding takes place and it is deteriorating rapidly. The community that lives there and the many stakeholders that travel through or have economic activities there have come together to define a plan to transform the Msimbazi Basin into a beacon of urban resilience solving the flood problem. Following the City Scan, CRP assisted the World Bank project team by carrying out **a real estate market review, financial analysis, regulatory assessment and generating real estate development programming options** for a 57-hectare area that could become buildable if the Msimbazi plan is implemented. The 57-hectare Msimbazi Redevelopment Plan supported by CRP proposes a coordinated investment program to deliver 5,400-5,900 new housing units, including 1,000-1,200 affordable units and up to 100,000 m² of auxiliary commercial uses and supplemental infrastructure.

Dar es Salaam City Scan



CRP SUPPORT TO CITIES AROUND THE WORLD



Facilitating pandemic response and adapting to future risks

CRP leverages its in-house spatial planning tools and emergency preparedness resources to respond to emergent risks and crises. For example, CRP is expanding the City Scan product with a section targeting epidemic risks, including identifying hotspots of disease transmission.

CONTACTS

Niels Holm-Nielsen

Global Lead

Resilience and Disaster Risk Management

The World Bank

nholmnielsen@worldbank.org

Manuela Chiapparino

Senior Operations Officer

GFDRR

The World Bank

mchiapparino@worldbank.org

For more info, please visit www.gfdrr.org/en/crp

