



**Resilient Urban Development
Saint Vincent and the Grenadines**

Resilience

Keren Carla Charles
Disaster Risk Management Specialist
World Bank Group

Technical Workshop for Arnos Vale and Kingstown
March 20 – 21, 2019 | NIS Building | Kingstown, SVG

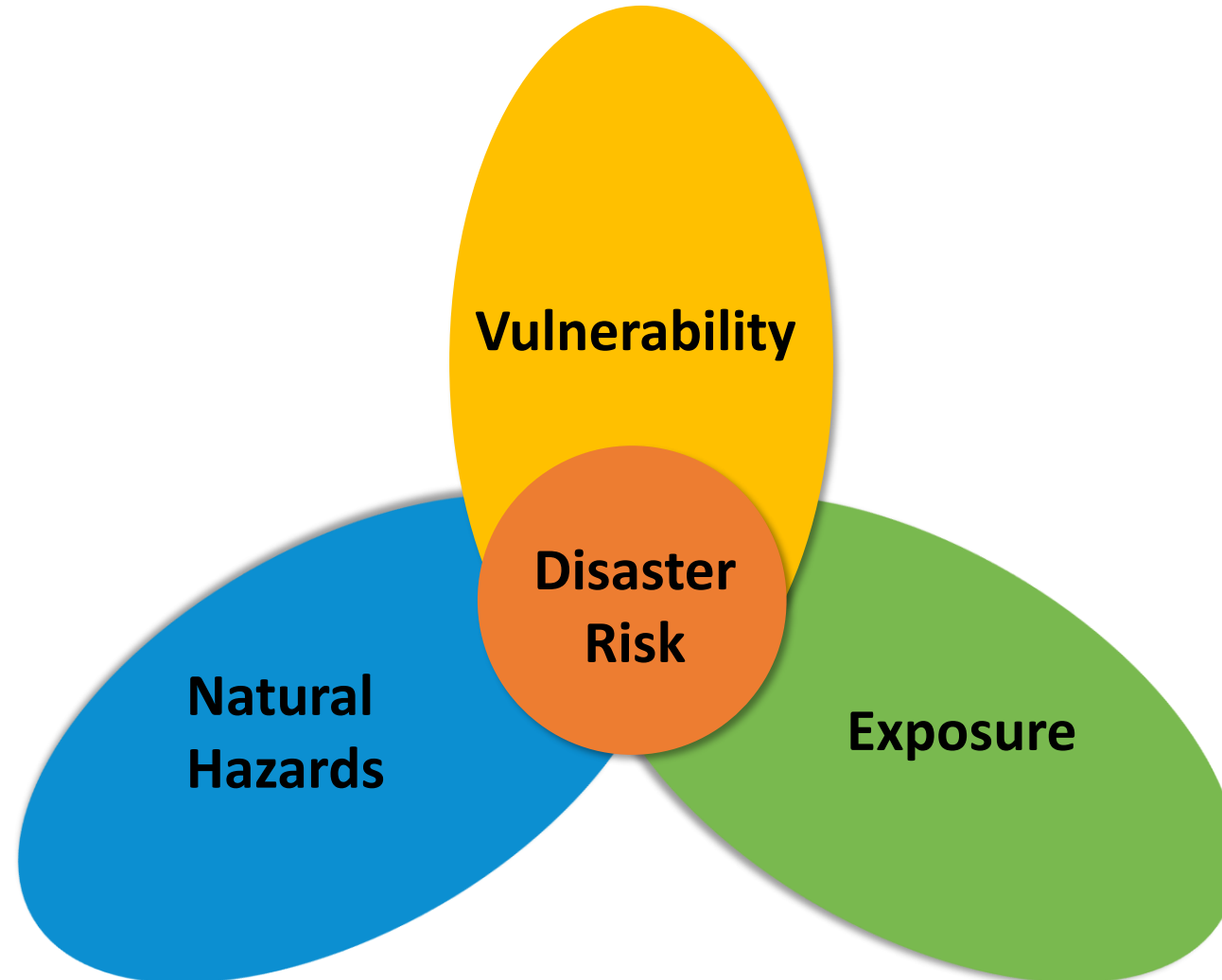
risk

/risk/

To expose (someone or something valued) to danger, harm, or loss



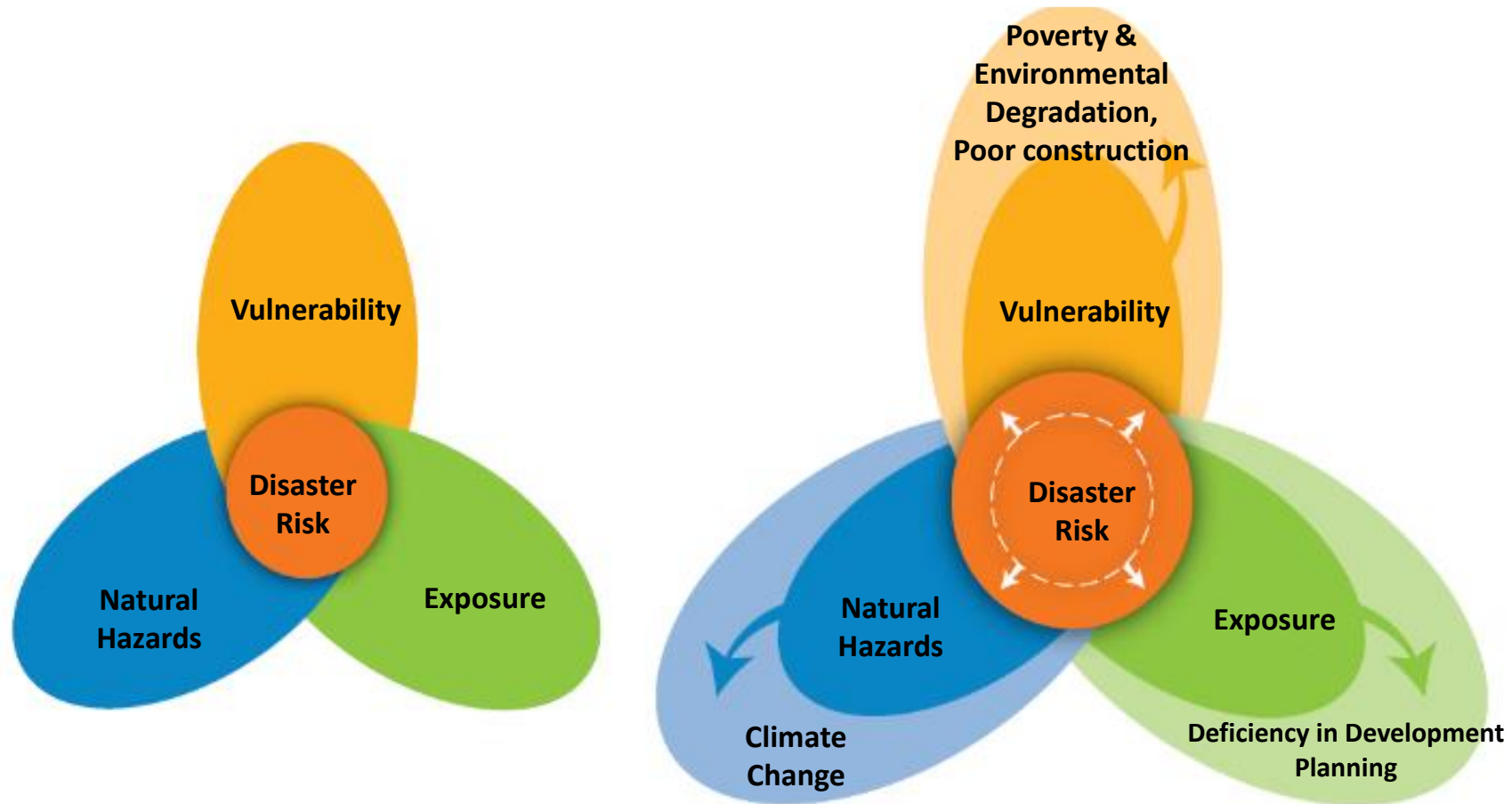
Disaster Risk is a Function of Natural Hazards, Vulnerability and Exposure



Who are the **Most Vulnerable Groups** in SVG?



Climate Change, Poor Planning, and Poverty Increase Disaster Risks



A silhouette of a tree with a trunk that curves significantly to the right, suggesting it has been bent by a strong wind. The tree is set against a dramatic sky with soft, golden light from a low sun, creating a hazy, atmospheric background. The foreground is dark, showing the silhouette of the ground and some grass.

Do You Bend or Break?

RESILIENCE

DRM is applying principles of risk management to natural hazards



Thank you!



GFDRR
Global Facility for Disaster Reduction and Recovery

ACP-EU Natural Disaster Risk Reduction Program

An initiative of the African, Caribbean and Pacific Group, funded by the European Union and managed by GFDRR



WORLD BANK GROUP
Social, Urban, Rural & Resilience