



*Resilient Urban Development  
Saint Vincent and the  
Grenadines*



## Planning for Urban Regeneration

Fernando Granados  
Urban Planner  
**IDOM Consulting**

**Technical Workshop for Arnos Vale and Kingstown**

**March 20 – 21, 2019 | NIS Building |  
Kingstown, SVG**

# 01

WHY URBAN PLANNING?

# WHY URBAN PLANNING?

Cities are changing dramatically and are reshaping the way we live. Urbanization presents a unique opportunity to remake and reinvent our cities: how we plan and design them matters



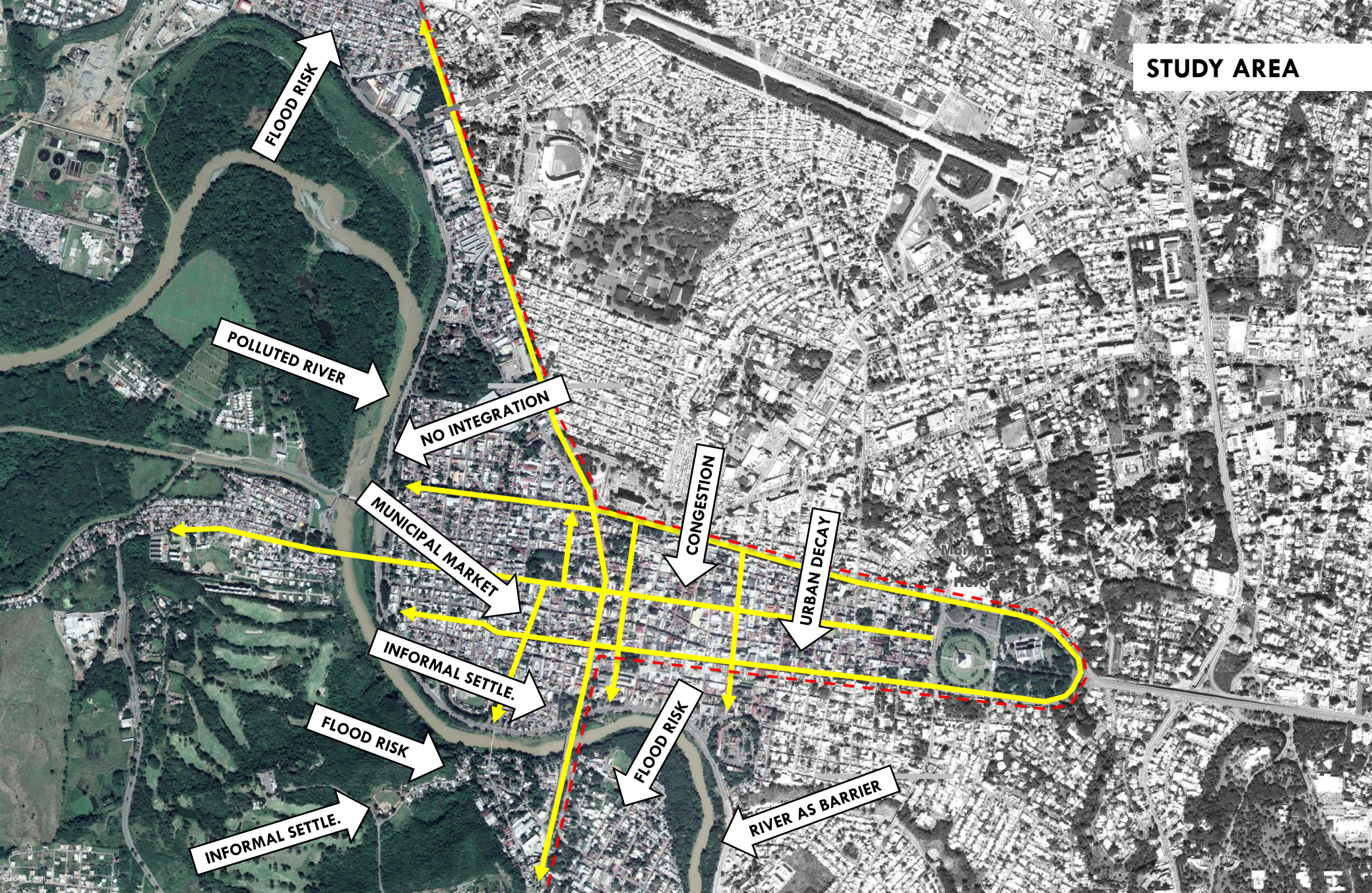
# 02

## CASE STUDIES

## URBAN REGENERATION

SANTIAGO DE LOS CABALLEROS, DOMINICAN REPUBLIC

**STUDY AREA**















FORTALEZA SAN LUIS



MINISTERIO DE DEFENSA  
COMANDO CON JUSTO MÉRITO Y A A



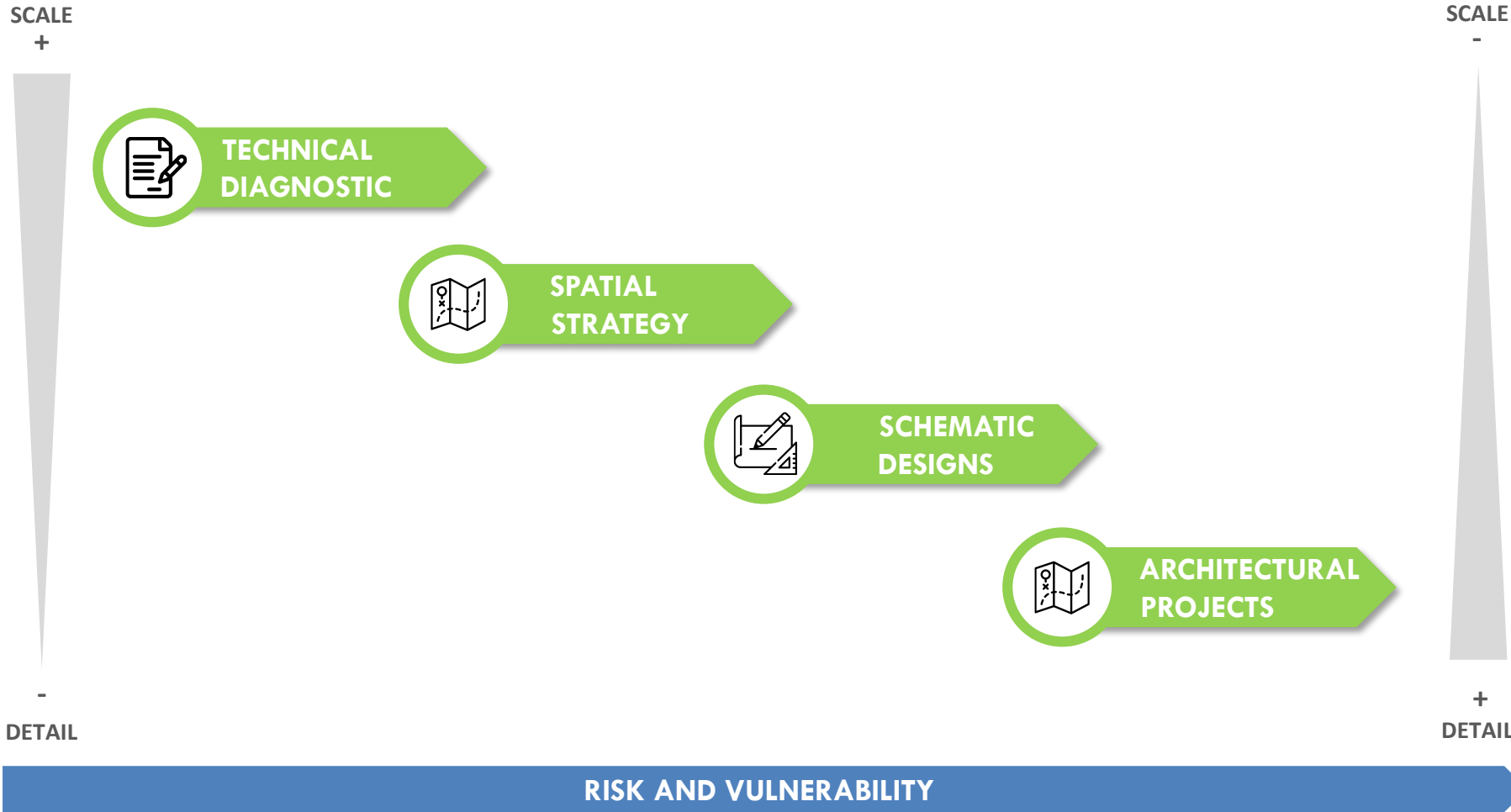








# MULTI-SCALAR APPROACH TO URBAN REGENERATION





# KEY THEMES OF URBAN REGENERATION

## KEY THEMES



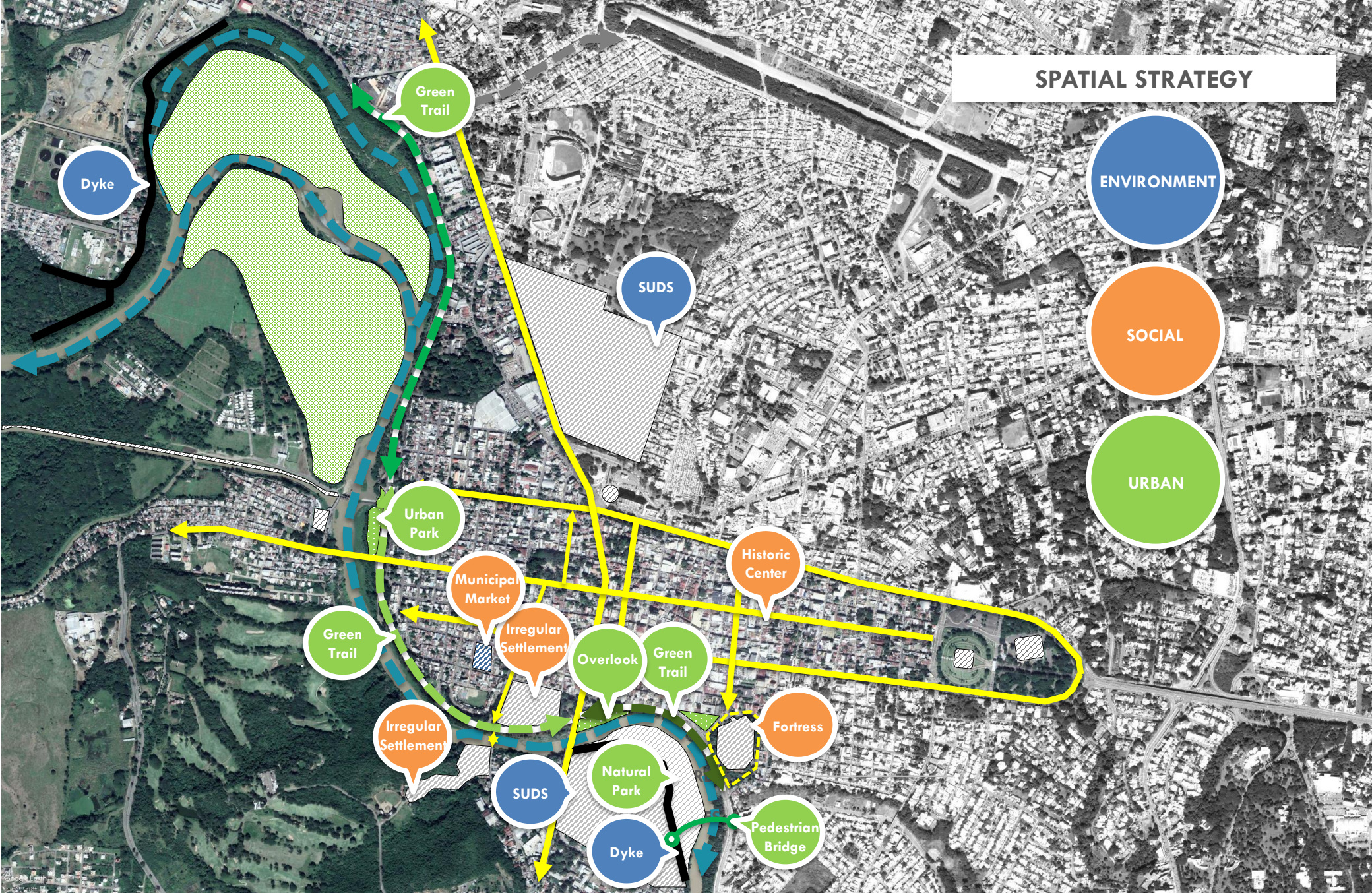
**RESILIENCY AS A CROSSCUTTING CONCEPT**  
RESILIENCE STRATEGY OF SANTIAGO DE LOS CABALLEROS (100RC)

# SPATIAL STRATEGY

ENVIRONMENT

SOCIAL

URBAN



# SPATIAL STRATEGY

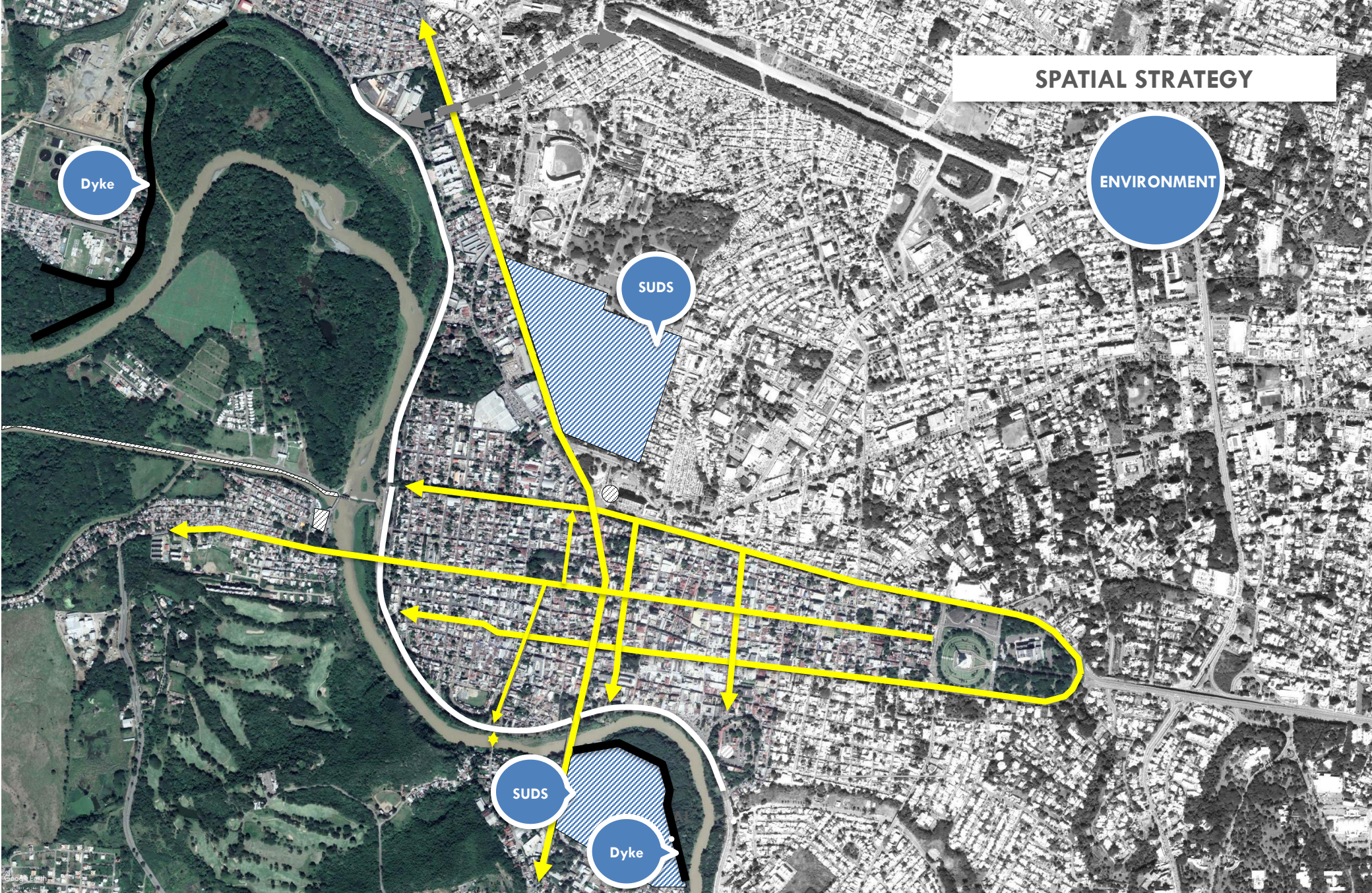
ENVIRONMENT

Dyke

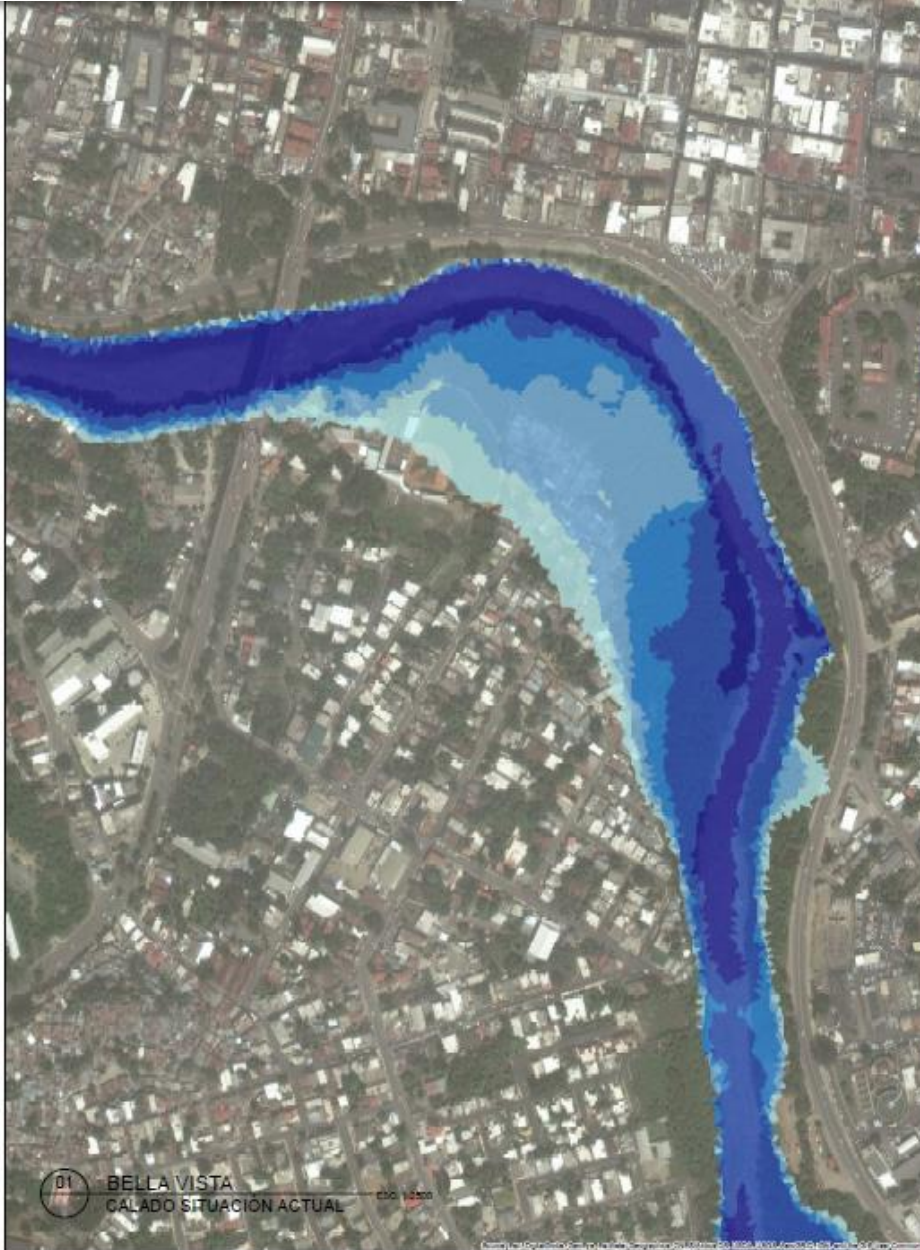
SUDS

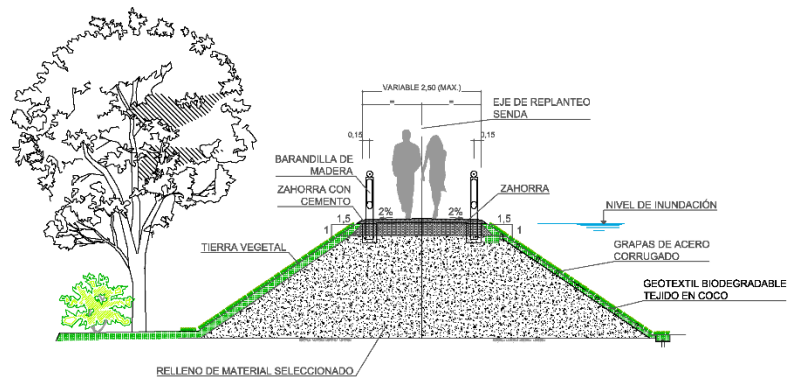
SUDS

Dyke



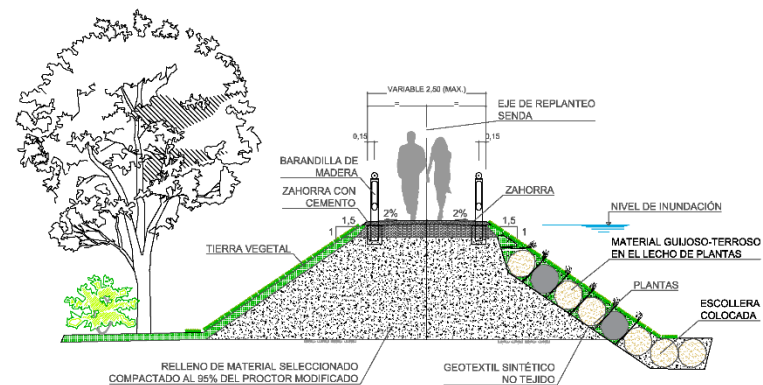
# FLOOD ANALYSIS



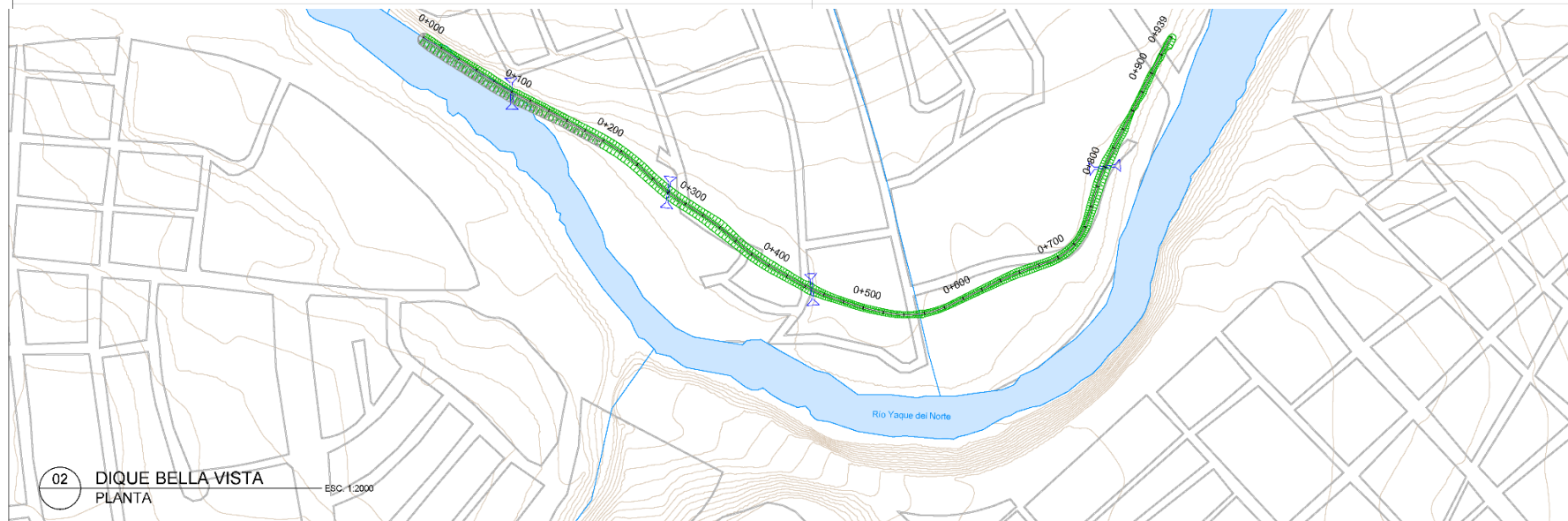


01 DIQUE DE PROTECCIÓN  
SECCIÓN TIPO TERRAPLÉN  
ESC. 1:50

DEBIL: DIQUE BELLA VISTA

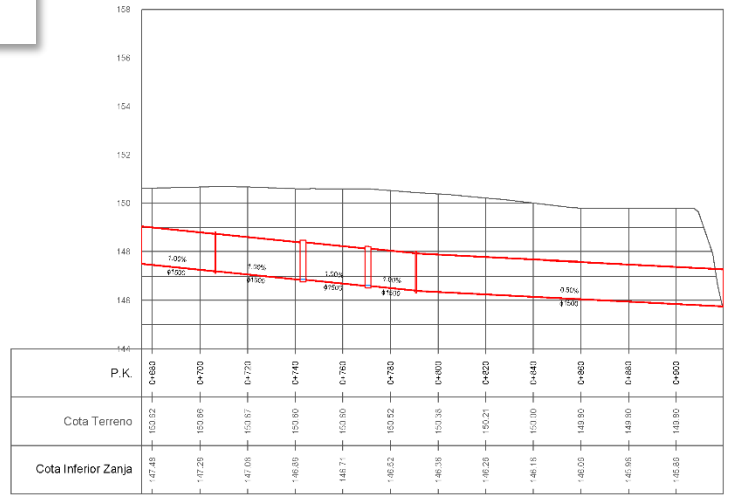


02 DIQUE DE PROTECCIÓN  
SECCIÓN TIPO ESCOLLERA  
ESC. 1:50

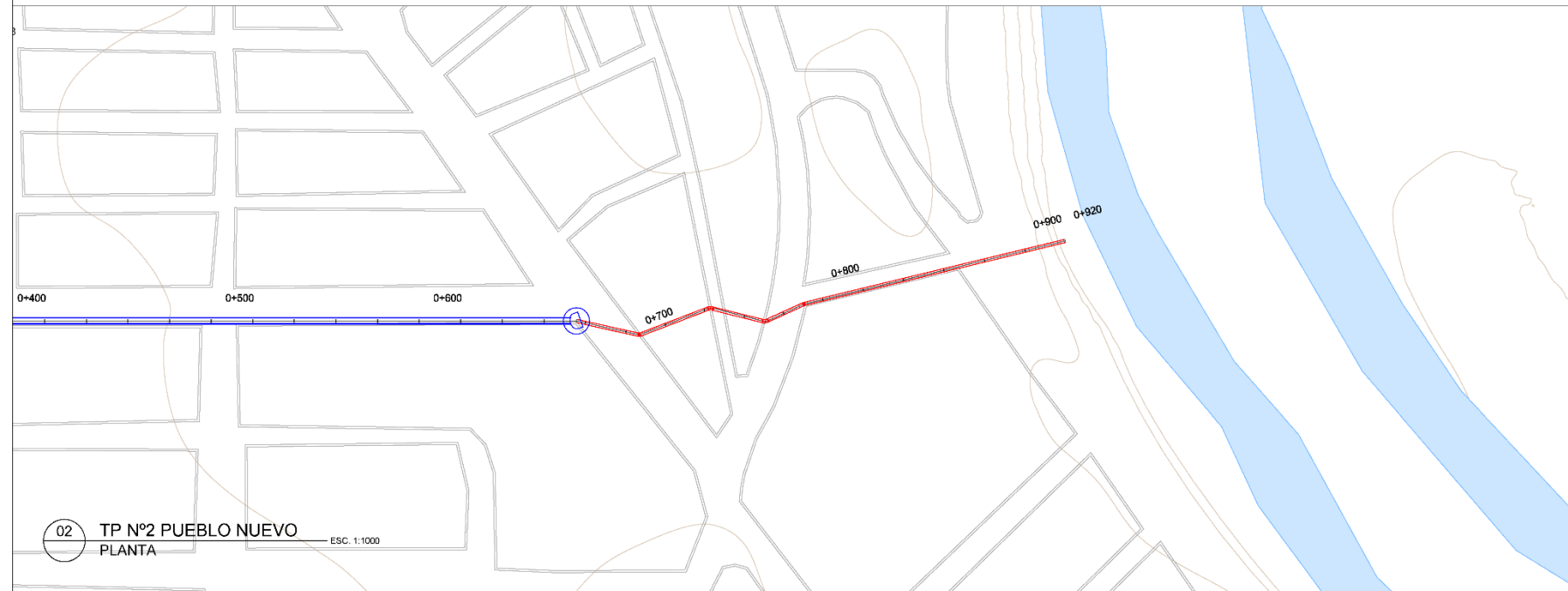


02 DIQUE BELLA VISTA  
PLANTA  
ESC. 1:2000

# RISK REDUCTION / DESIGN



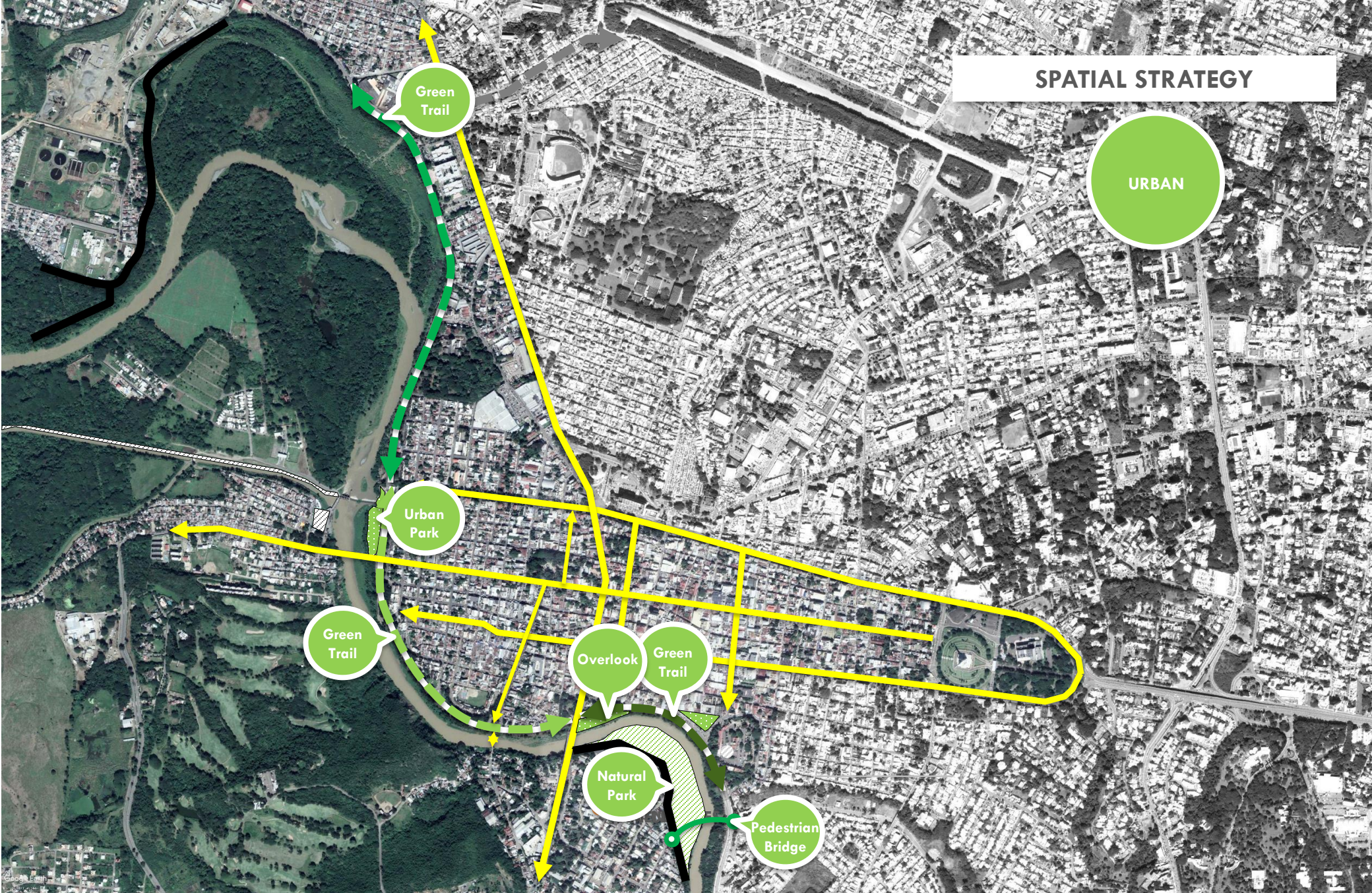
01 TP N°2 PUEBLO NUEVO  
PERFIL LONGITUDINAL  
EH 1:1000, EV 1:100



02 TP N°2 PUEBLO NUEVO  
PLANTA  
ESC. 1:1000

# SPATIAL STRATEGY

URBAN



**UNDERUTILIZED LAND**





# NEW URBAN PARK

**OPEN FORUM**



**NATURAL POOL IN RIVER**



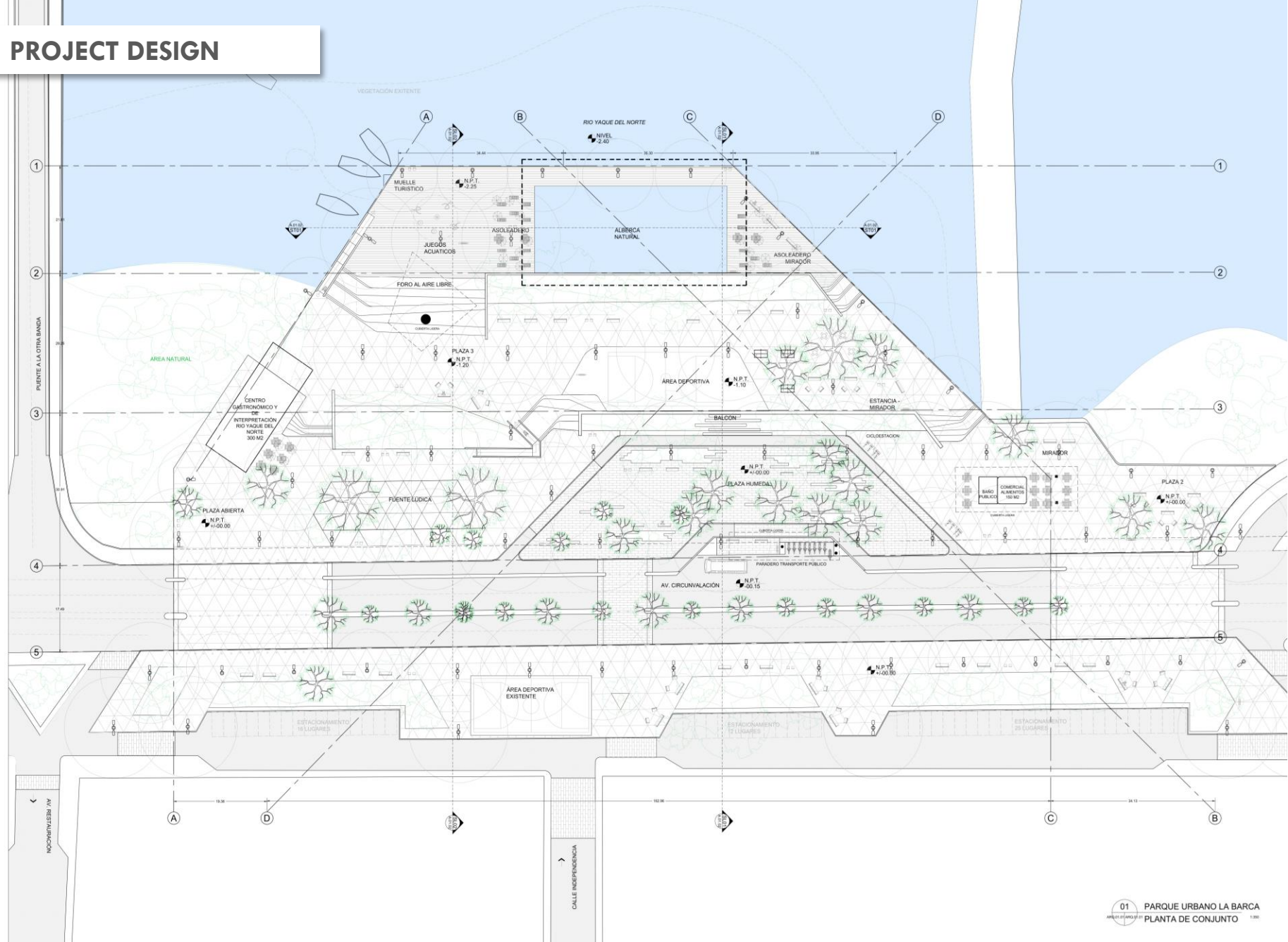
**SPORTS FACILITIES**



**COMMERCIAL USES**



# PROJECT DESIGN



# SPATIAL VISION

COMMERCIAL SPACE

OPEN FORUM

NON MOTORIZED MOBILITY



# UNDERUTILIZED LAND



**PLAZA/LOOKOUT POINT**



**PLAZAS**

**PLAYGROUND**



**VEGETATION**



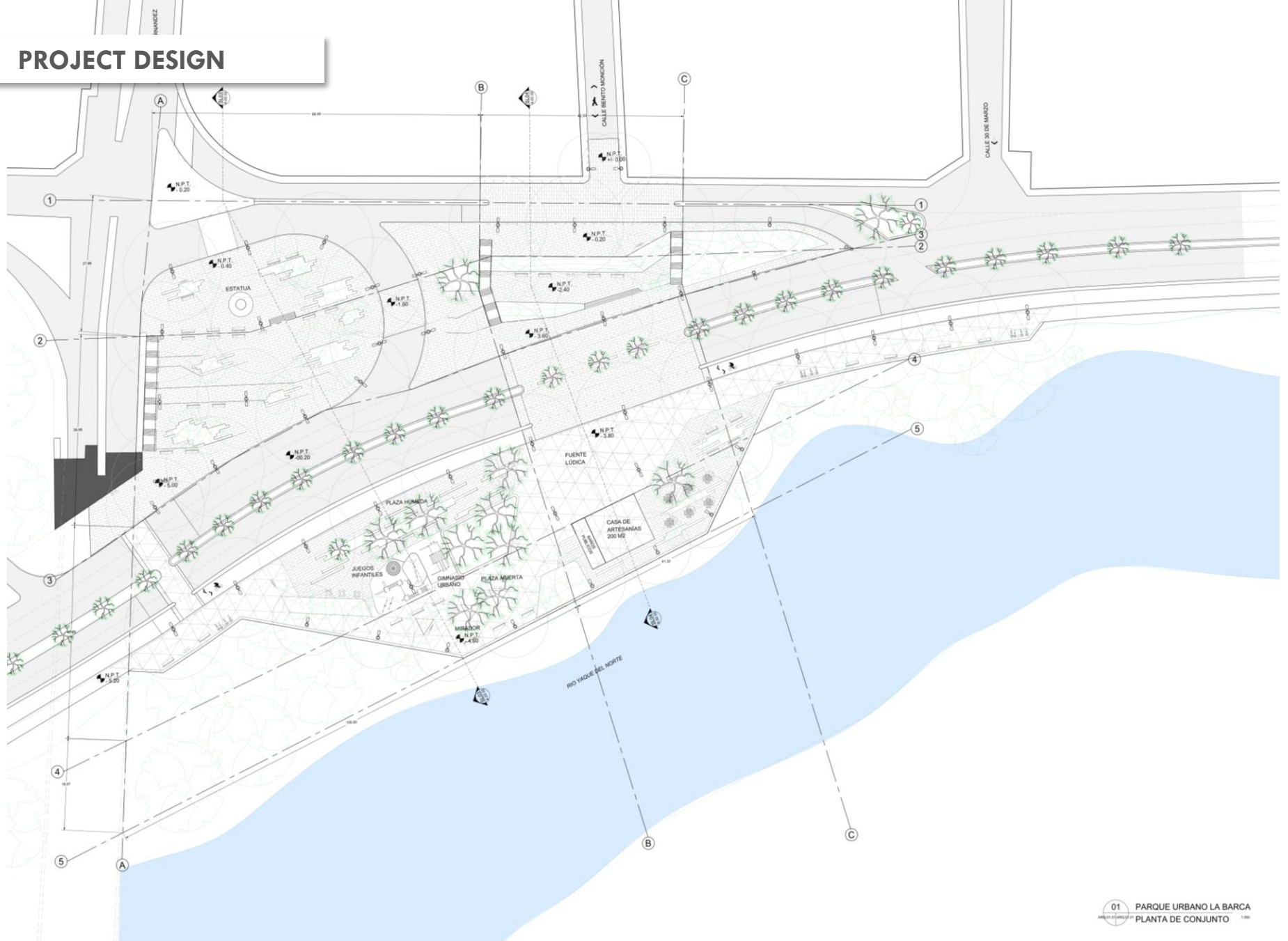
**COMMERCIAL SPACE**



Ave. Circunvalación

el Norte

# PROJECT DESIGN





**SPEED REDUCTION**

**COMMERCIAL SPACE**

**OPEN GYM**

**PLAYGROUND**



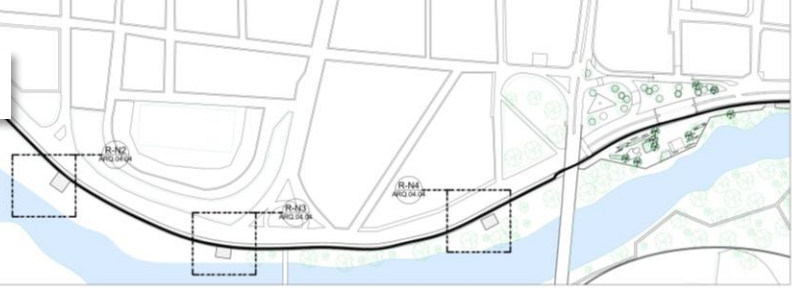


# UNDERUTILIZED LAND

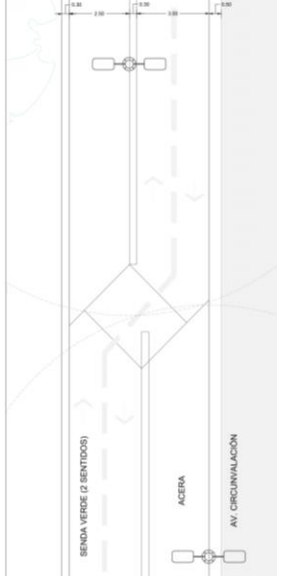


# PROJECT DESIGN

01 SENDA VERDE YAQUE DEL NORTE  
PLANTA DE CONJUNTO SECCIÓN DT04

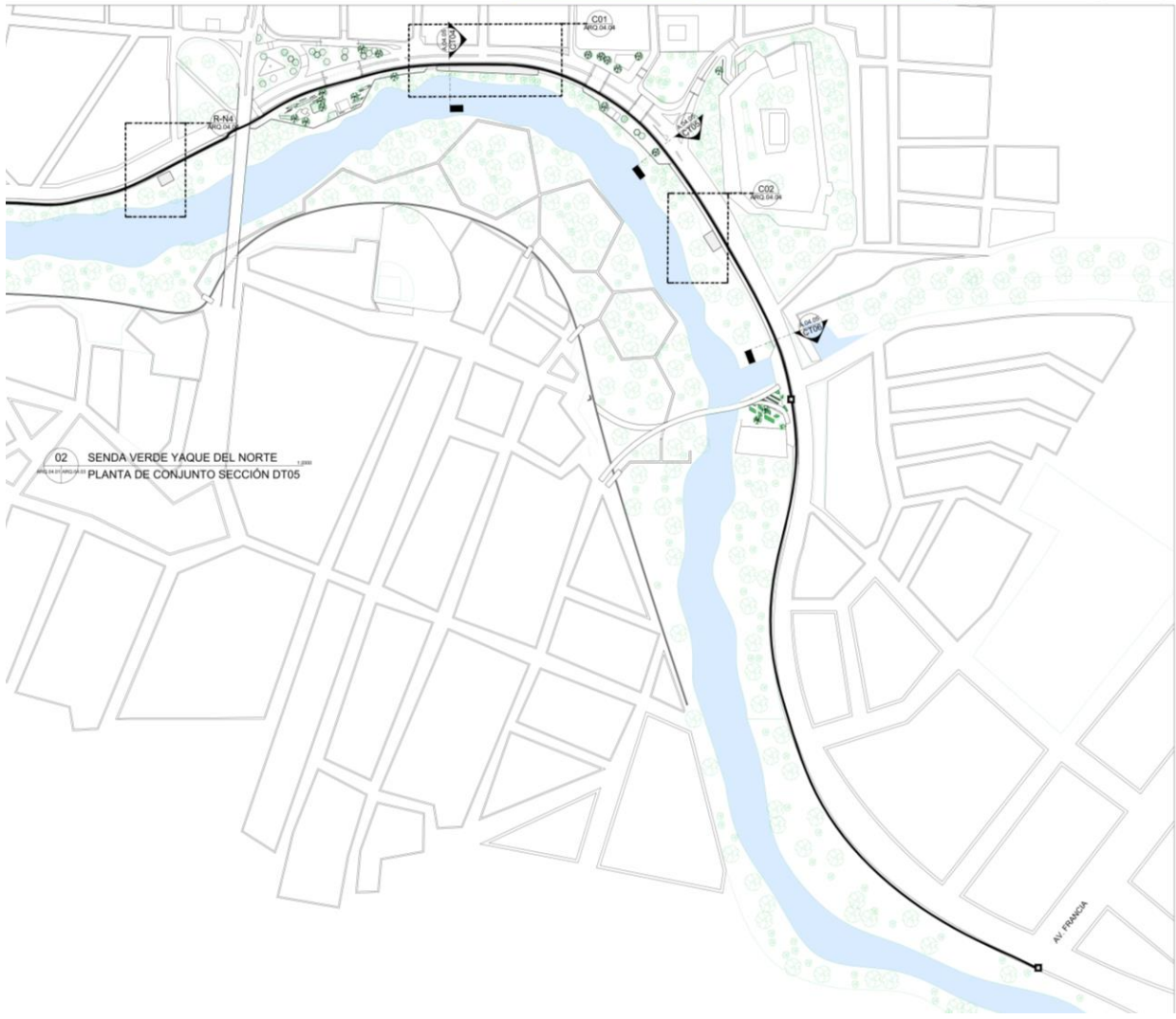


03 SENDA VERDE YAQUE DEL NORTE  
DETALLE PLANTA TIPO 01



04 SENDA VERDE YAQUE DEL NORTE  
DETALLE PLANTA TIPO 02

02 SENDA VERDE YAQUE DEL NORTE  
PLANTA DE CONJUNTO SECCIÓN DT05

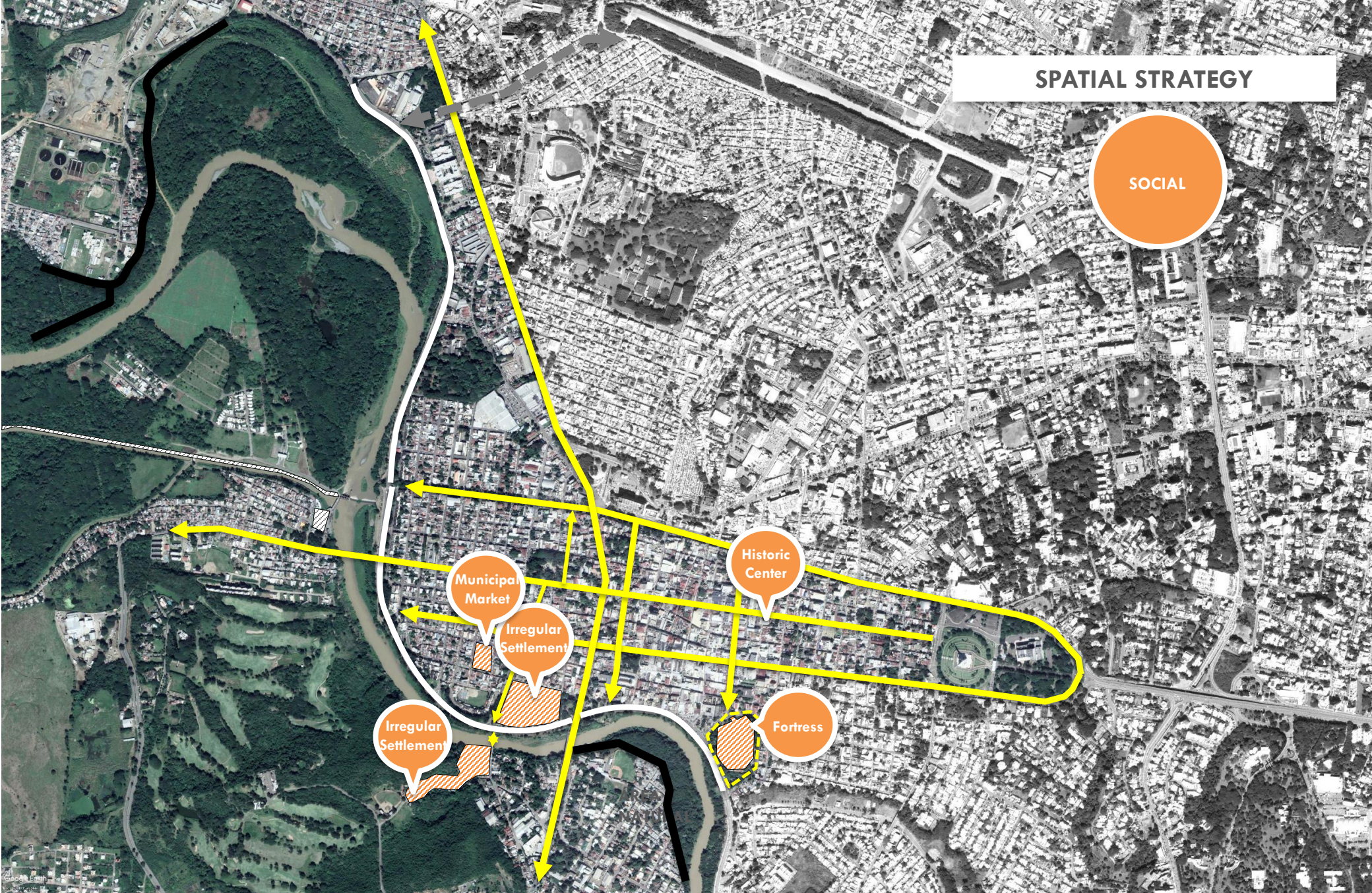


05 SENDA VERDE YAQUE DEL NORTE  
DETALLE PLANTA TIPO 03



# SPATIAL STRATEGY

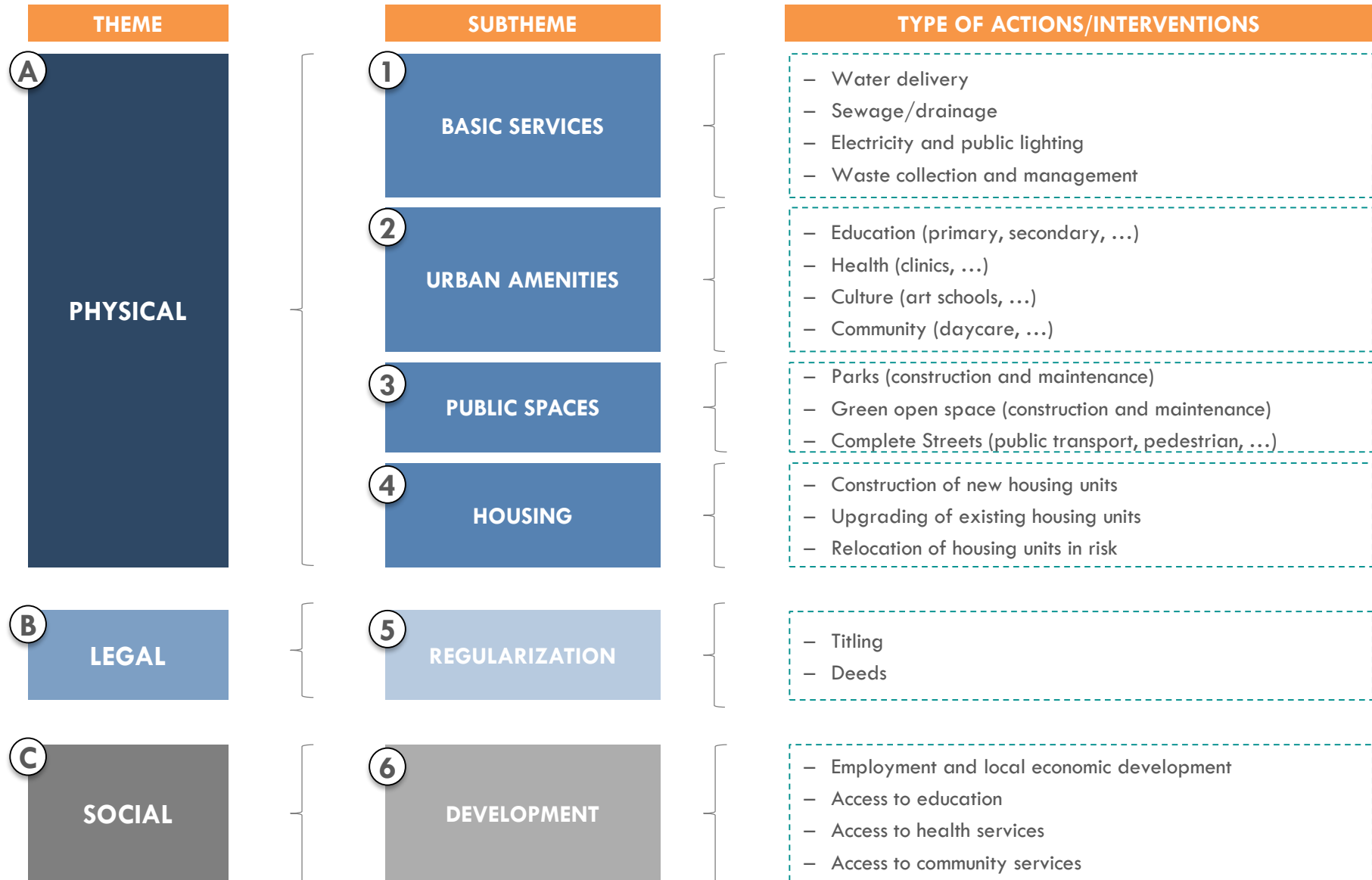
SOCIAL



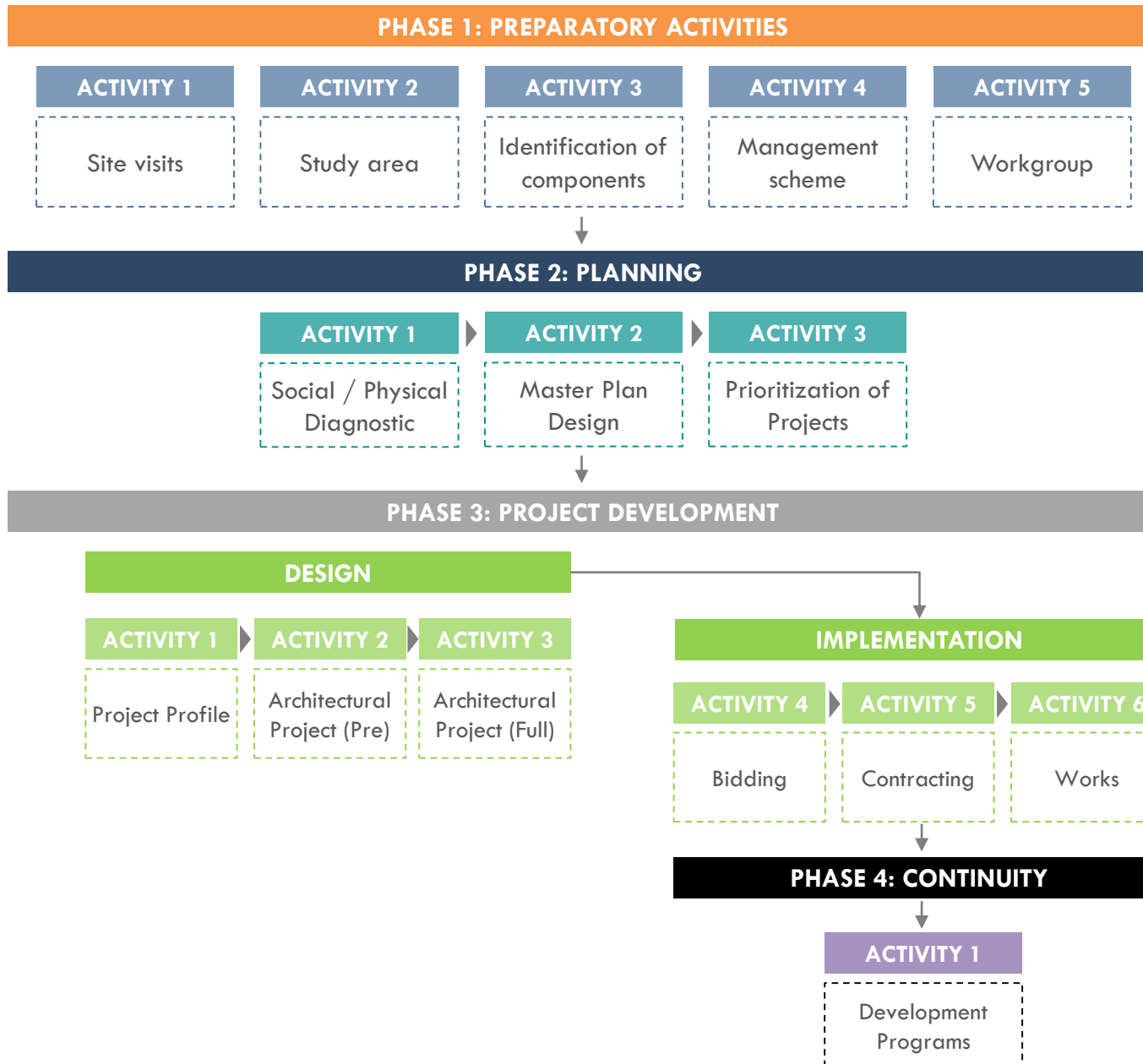
# HOUSING UPGRADING



# A COMPREHENSIVE APPROACH



# AN INCREMENTAL PROCESS



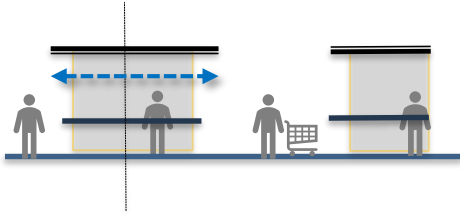
# REDESIGN/REDEVELOPMENT OF MUNICIPAL MARKET



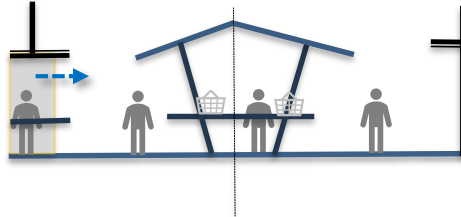


# REDEVELOPMENT OF MUNICIPAL MARKET

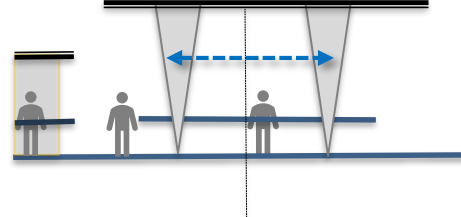
## Inner vending stalls



## Outer vending stalls / relationships with immediate context



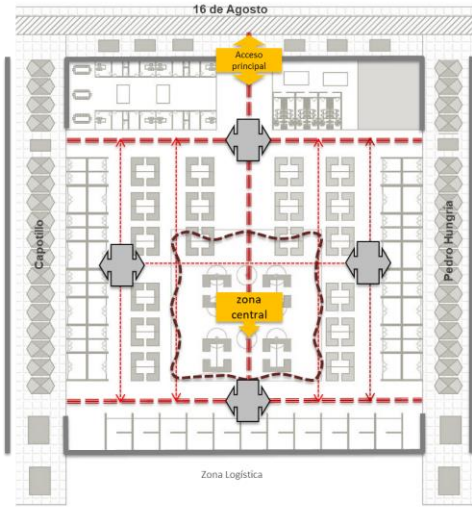
## Inner restaurants and cafés



## Loading area and waste management



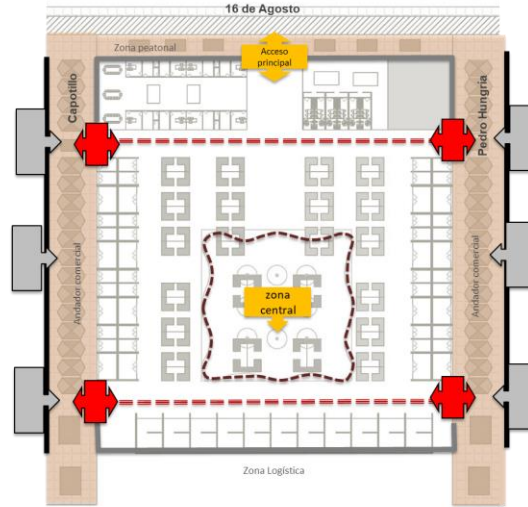
## INTERNAL CIRCULATION



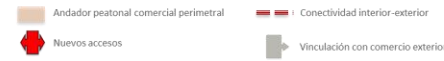
### Simbología



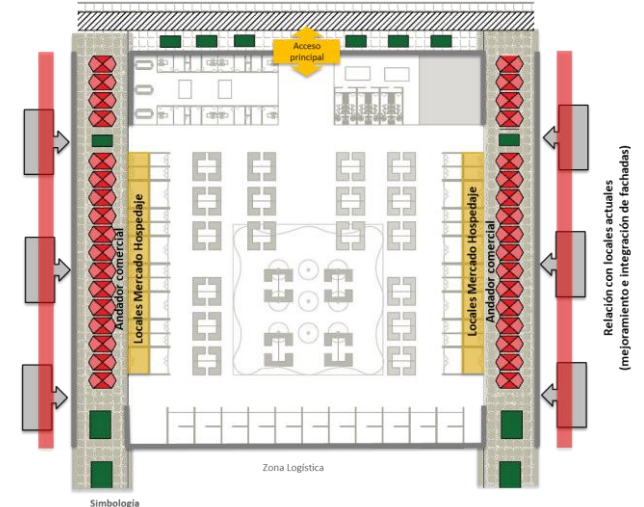
## EXTERIOR ACCESS



### Simbología



## OUTER COMMERCIAL SPACE

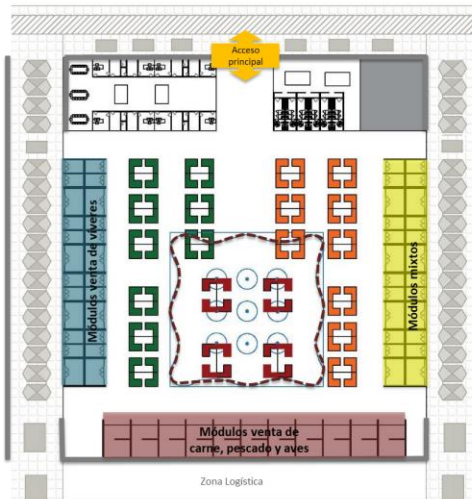


### Simbología

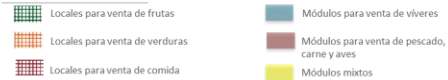


Relación con locales actuales (mejoramiento e integración de fachadas)

## ORGANIZATION BY TYPE OF PRODUCTS



### Simbología



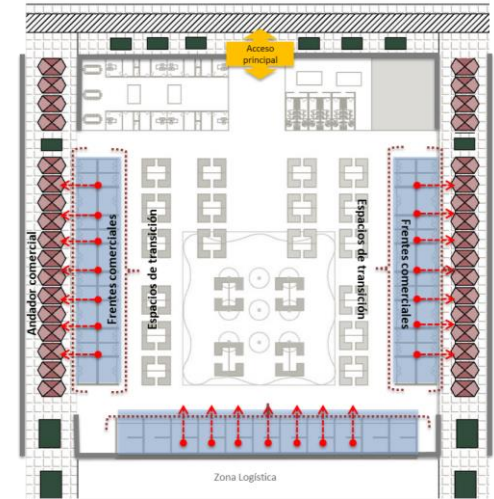
## ORGANIZATION BY TYPE OF PRODUCTS



### Simbología



## OUTER-INNER RELATIONSHIPS



### Simbología



# UPGRADING THE HISTORIC CENTER

## UTILITIES

### UNDERGROUND WIRING



### HYDRANTS

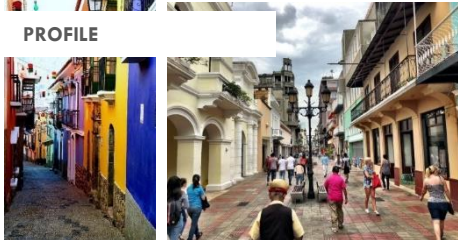


### RAIN CHANNELS



## FACADES

### PROFILE



### TEXTURES/MATERIALS

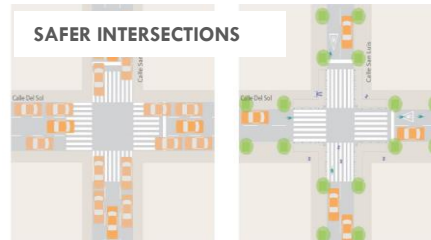


### COLOR PALETTE

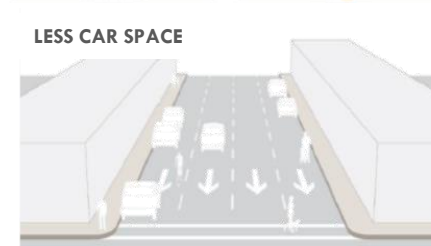


## MOBILITY

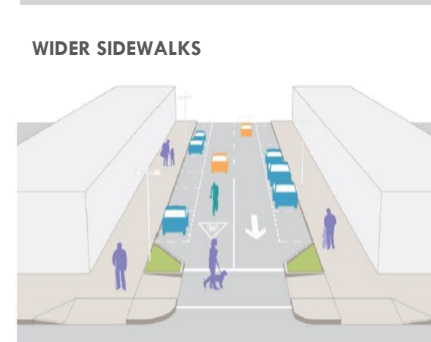
### SAFER INTERSECTIONS



### LESS CAR SPACE



### WIDER SIDEWALKS



## UNIVERSAL ACCESIBILITY

### RAMPS



### TACTILE PATHS



### STREETLIGHTS



# UPGRADING THE HISTORIC CENTER

## PARKING MANAGEMENT

NO PARKING AREAS



PARKING METERS



PARKLETS



## PUBLIC TRANSPORTATION

BUS STOPS / SHELTER



ADS TO FINANCE



USER INFORMATION



## STREET DESIGN

VEGETATION PALETTE



MAINTENANCE



INTEGRATED W/ STREETS



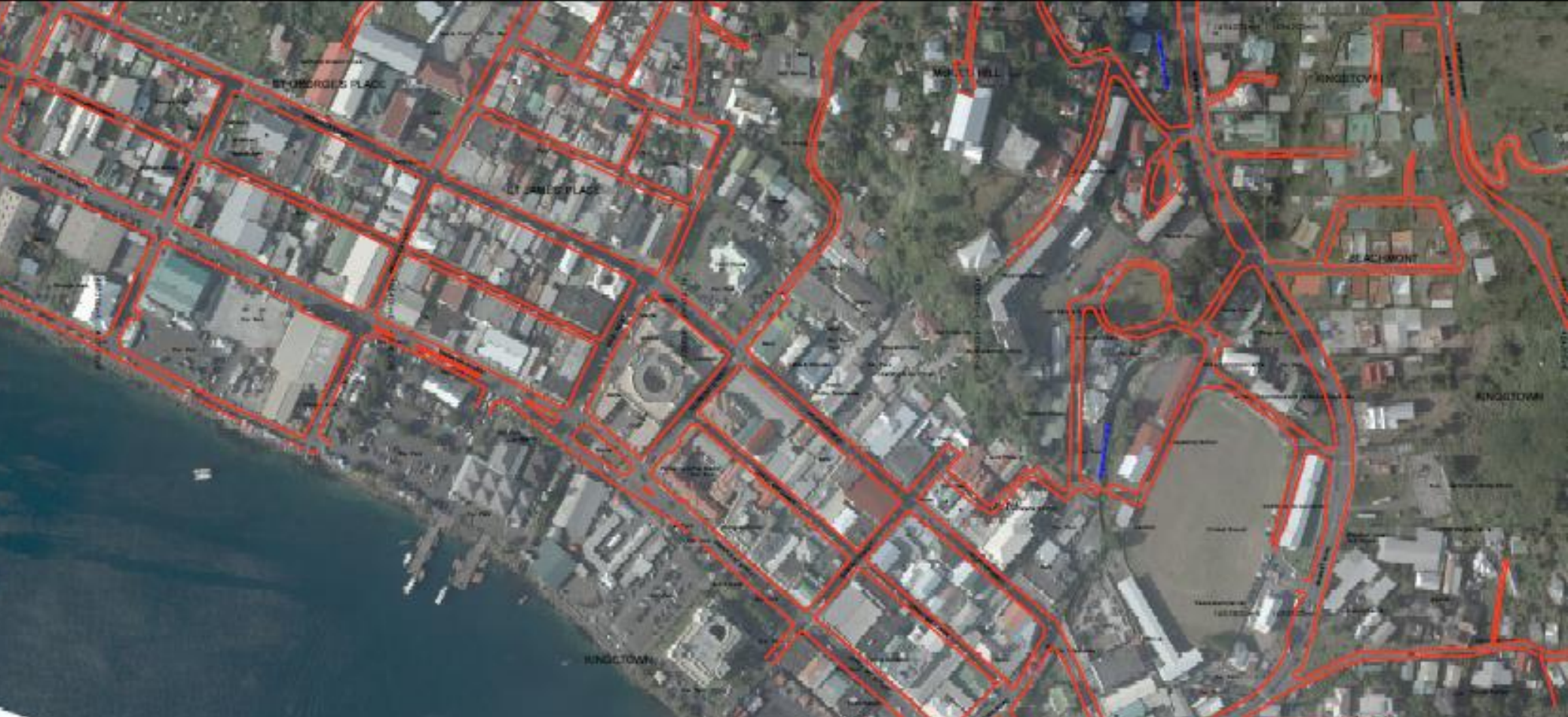
## URBAN FURNITURE

BENCHES, ETC...



WASTE, ETC...

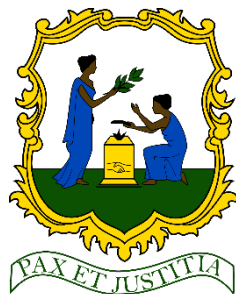




- 1. What is needed to activate Kingstown during day/night hours, and weekends?**
- 2. What underutilized sites and properties can have better/higher uses?**
- 3. What anchor projects can help catalyze a larger regeneration process?**



# Thank you!



**GFDRR**  
Global Facility for Disaster Reduction and Recovery

**ACP-EU Natural Disaster Risk Reduction Program**

*An initiative of the African, Caribbean and Pacific Group, funded by the European Union and managed by GFDRR*



**WORLD BANK GROUP**  
Social, Urban, Rural & Resilience