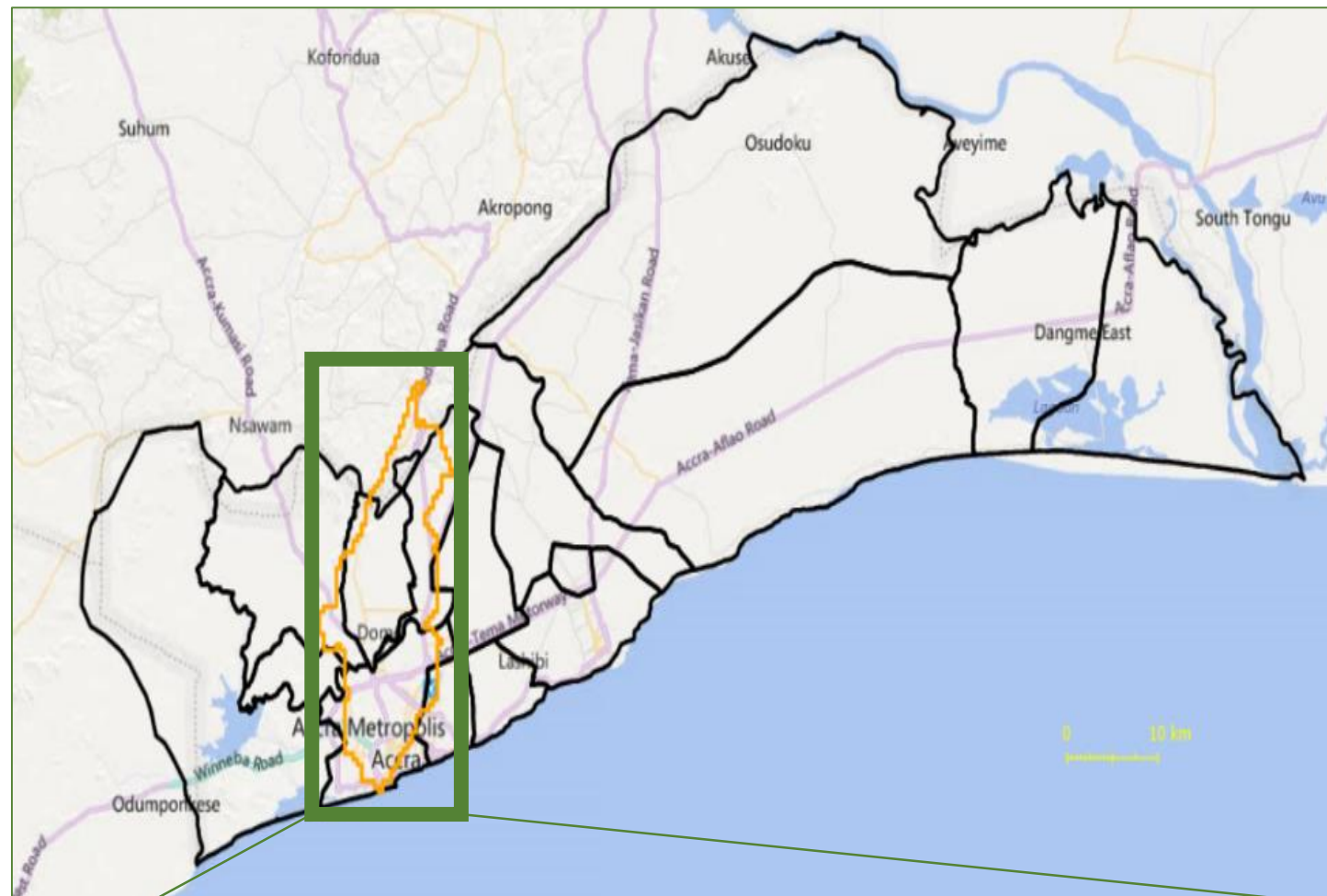


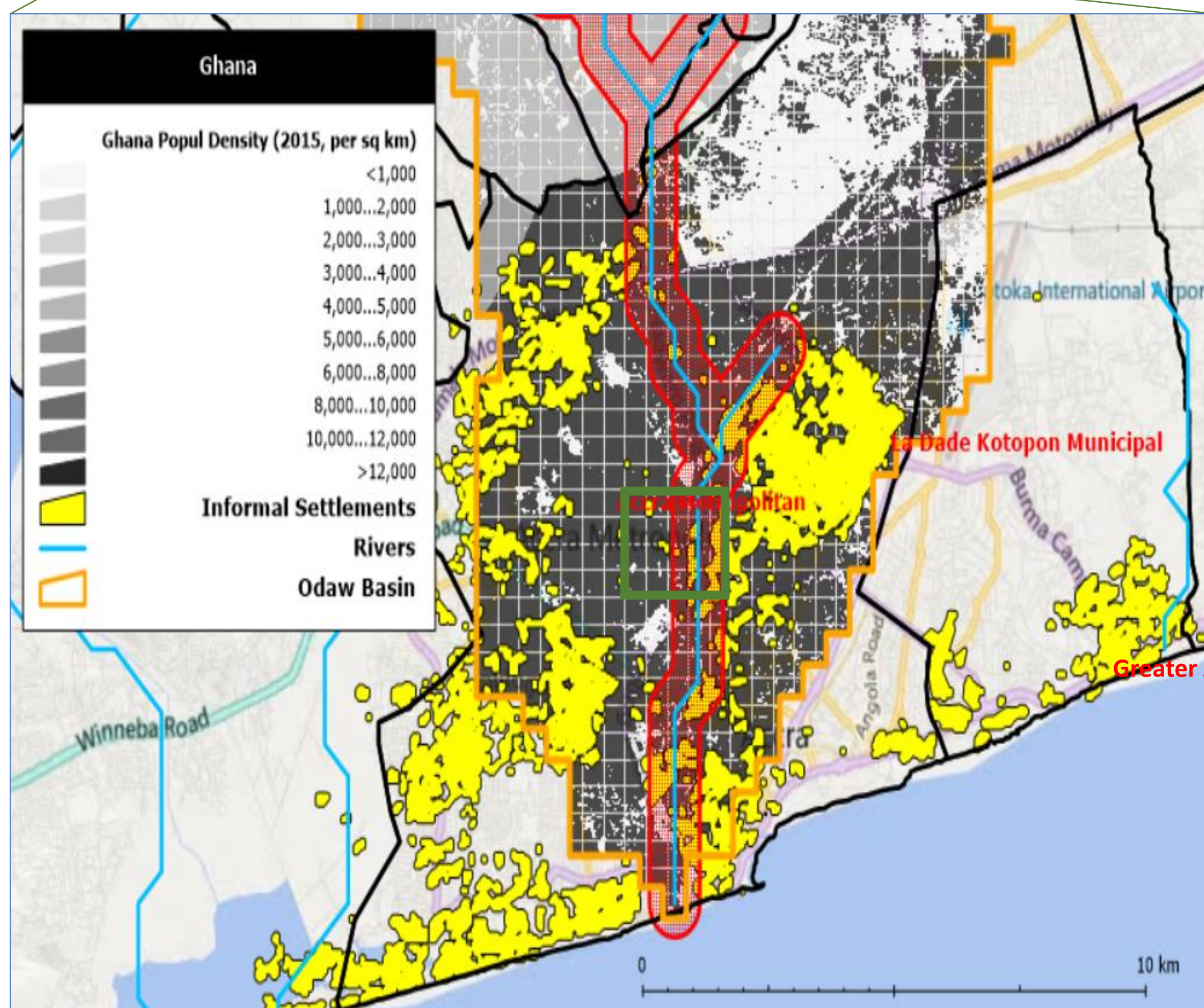
Greater Accra Resilient and Integrated Development Project



Greater Accra Region

- home to 4.6 million, projected increase to 11 million by 2050
- 20% of Ghana's population
- 25% of GDD
- Economic, Financial, Administrative and Cultural Center

Odaw River Basin



TOTAL Investment Needs for Greater Accra:

\$750M

Phase I Identified Investments (Odaw Basin):

\$300 M

- Component 1: Urban drainage improvements & flood mitigation in Odaw River Basin (\$150 M)
- Component 2: Solid waste management (\$70 M)
- Component 3: Informal settlements upgrading (\$60 M)
- Component 4: Capacity development and project management (\$20 M)

Phase I identified Study:

Water Front Transformation Framework Plan (\$1 M)

How Will These Investments be Financed?

Concessional financing + Govt Budget + Grants

- \$150 Million IDA
- \$70 Million potential GCF
- \$10 Million potentially from SECO
- \$10 Million Government own resources

Potential Private Sector Financing to Leverage

Water Front Transformation Initiative

- \$500M million potentially unlocked from LVC
 - Land pooling
 - Sale of Development Rights