



April 2019, Beira city, Mozambique

# *JICA's Cooperation on Community-led Recovery*

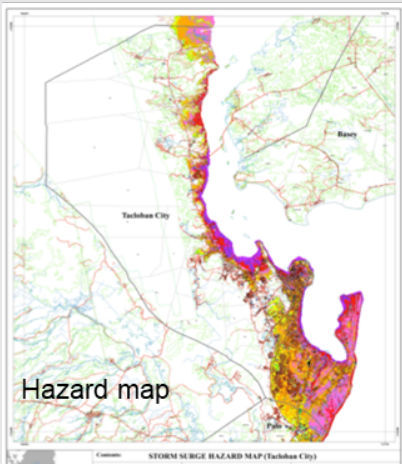
*World Reconstruction Conference 4  
- Community-led Recovery -  
13<sup>th</sup> of May, 2019*

**Atsutoshi Hirabayashi**

Senior Advisor

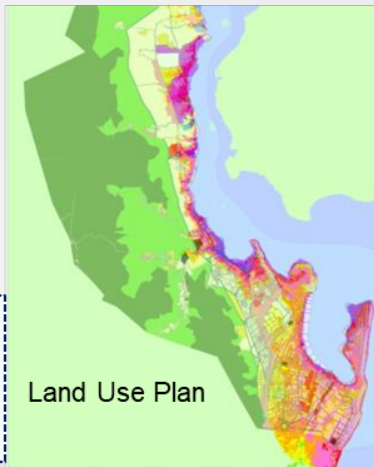
Infrastructure and Peace-Building Department,  
Japan International Cooperation Agency (JICA)

### Consensus building along with local context

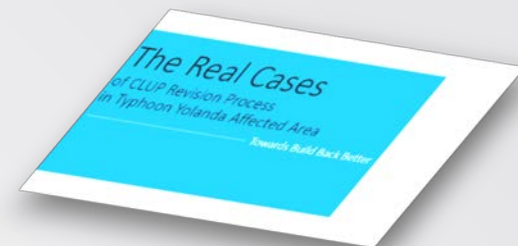


Workshop with citizens

- Setting: No dwelling zone
- Relocation site development
- Area Management with Structure Measures



**Monitoring:**  
 Local government on consensus building with community and use of hazard maps  
 Central government on model dissemination



Elaborated Real Cases as a model

Central Government (HLURB\*) disseminated the model to other cities

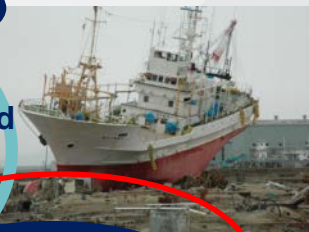
\*Housing, Land use regulatory board

..... Apply for Experiences of Local Government's Recovery and Reconstruction in Japan .....




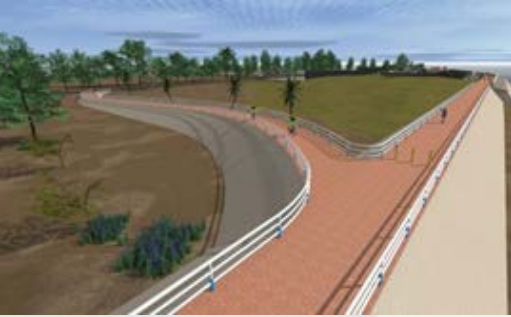

**People-centered approach to strengthen non-structure measures**

- Land use plan / relocation plan
- Disaster Risk Reduction Plan / Evacuation Drill
- Memorial Museum, etc.

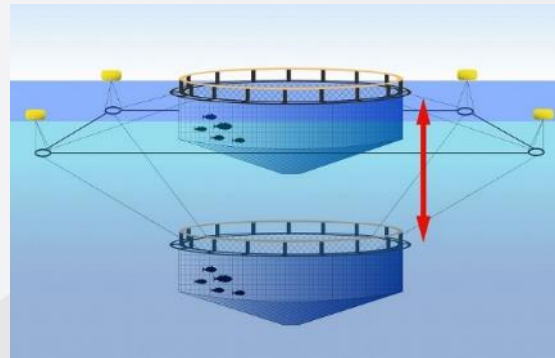


**Local Government with smaller budget, aging society, decline in child-population**

- Recovery plan formulated through consensus-building between community and local government leads to smooth implementation by the government and people.

	Entrance of cycling road	Tidal embankment	Light house
Plan			
Aug, 2018			

- Technical cooperation: introduction of typhoon-resistant fish cages  
⇒ the government disseminates as best practices of resilient recovery
- Strengthen fish culture system for existed community  
⇒ more income/sustainable recovery



Submersible cage



2015/08/05

## Community-led Livelihood Recovery - Technical Cooperation in Nepal and Indonesia -

- Support women's cooperatives as key actors for livelihood recovery in Nepal
- Community restoration through livelihood recovery activities in Indonesia



Left: Goat faring in Nepal

Right: Local handy-craft in Indonesia



**1** “Ensuring consensus-building between local government and community” seems long way but never suffers a setback: This is the Shortest/Sustainable way for smooth recovery.

.....

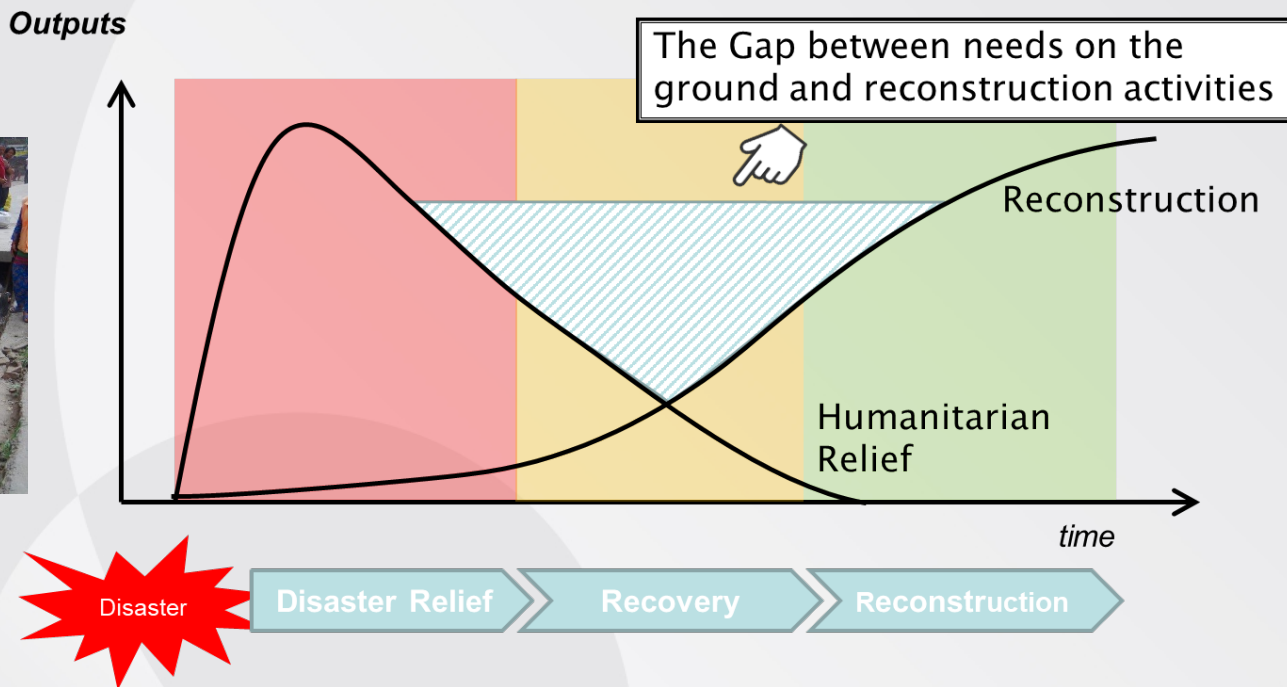
**2** Understanding community’s context and strengthening existing community’s solidarity by local government in ordinary conditions leads to not only early response and smooth recovery but enhancement of its resilience.

.....

**3** Integrating good practices of community-led recovery on the ground into the concerned national policies/guidelines is a key support to the government to enforce/disseminate them extensively.

**These policies will be applied for support to cyclone-affected areas in Mozambique as well**

# Appendix



- The risk of community collapse will be bigger if the above-mentioned gaps remain for a long time.
- To fill the gap, seamless support is indispensable. Collective actions by community leads to strengthening their solidarity.