



# Inclusive Resilience - Learnings after typhoon Haiyan

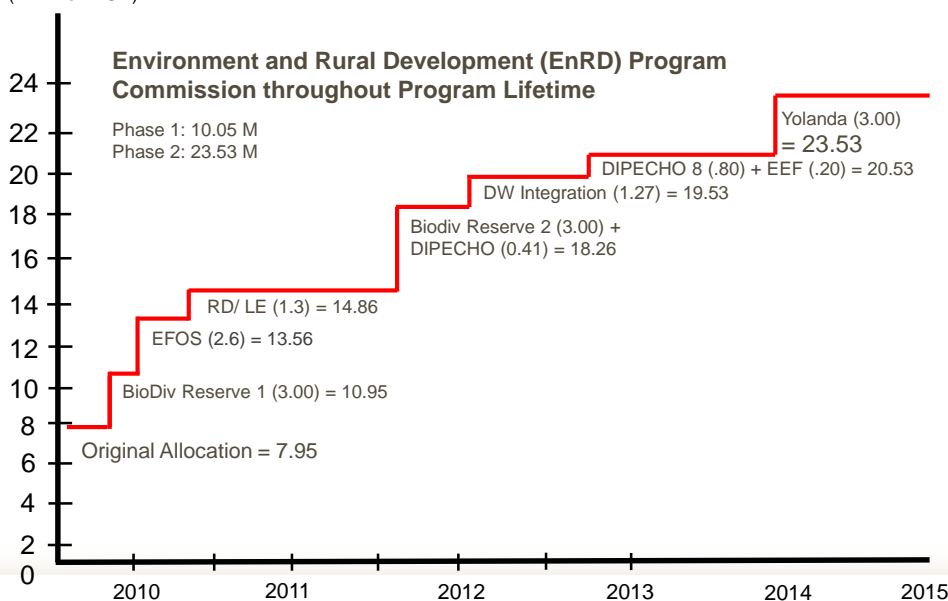
Knowledge Partnership Day: From Recovery to Resilience  
GFDRR, IFC, Washington, April 26, 2016

Dipl.-Kfm. Matthias Niggel |  
Senior Advisor  
GIZ Philippines  
[matthias.niggel@giz.de](mailto:matthias.niggel@giz.de)

Page 1



(In Million EUR)

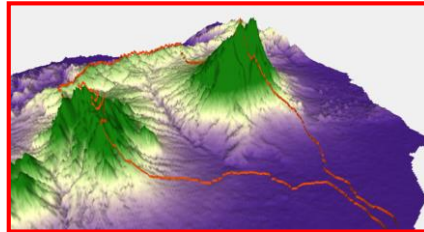


Page 2

# A Typical Watershed-Ecosystem Landscape in the Philippines

**giz** Deutsche Gesellschaft  
für Internationale  
Zusammenarbeit (GIZ) GmbH

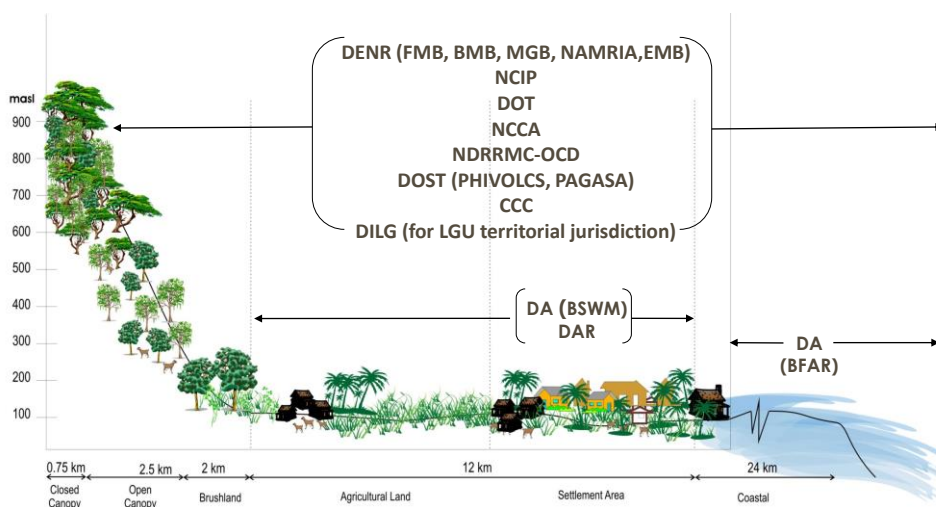
Covers the **total area** of a **ridge to reef landscape** inclusive of all types of lands of the public domain, agricultural lands, private lands, foreshore areas.



Page 3

## POLICY ENVIRONMENT

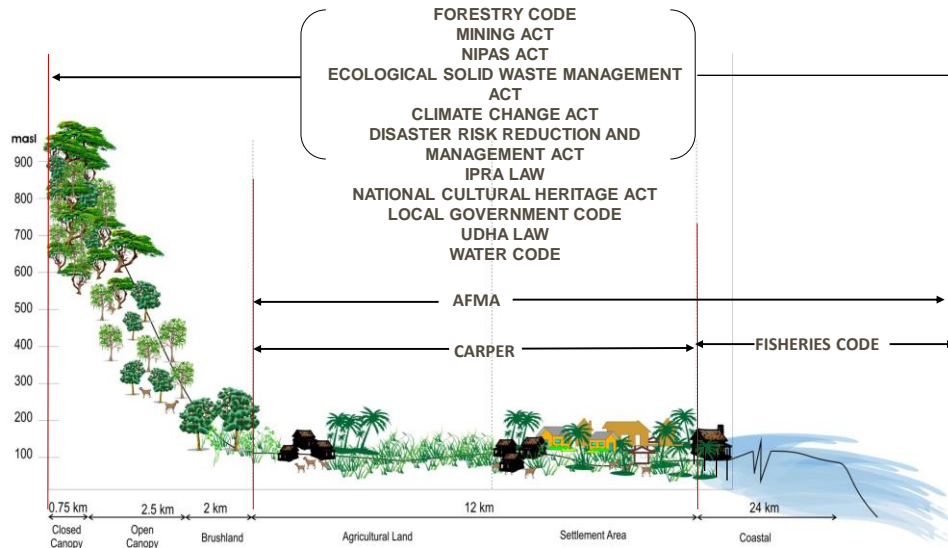
**giz** Deutsche Gesellschaft  
für Internationale  
Zusammenarbeit (GIZ) GmbH



Page 4

## HLURB COOPERATION LANDSCAPE FOR CLUP 2013-2014 with National Technical Agencies

**giz** Deutsche Gesellschaft  
für Internationale  
Zusammenarbeit (GIZ) GmbH



Page 5

## CLUP Guidebook Series 2013-2014

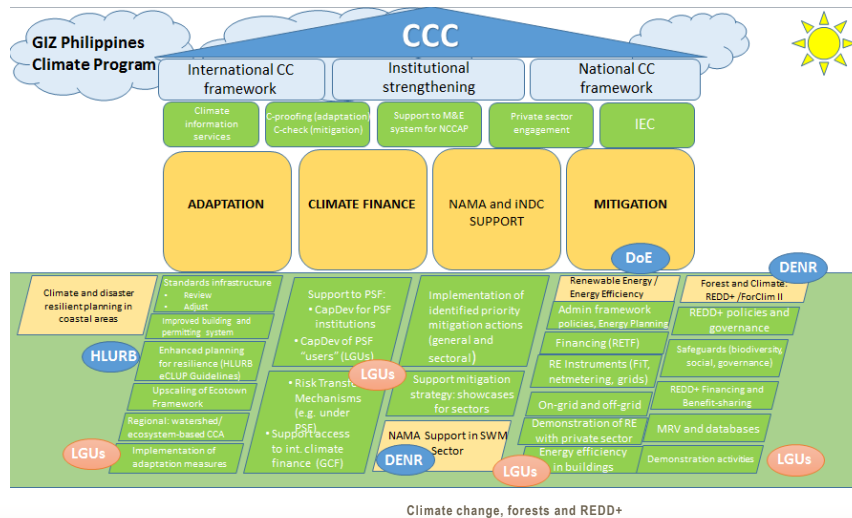
**giz** Deutsche Gesellschaft  
für Internationale  
Zusammenarbeit (GIZ) GmbH



Page 6

## Evolving Adaptation & Resilience Program..

**giz** Deutsche Gesellschaft  
für Internationale  
Zusammenarbeit (GIZ) GmbH



29.02 M (12.2015)  
+14.1 M (2016/17(?))

26.04.2016

Page 7

## Building Back Better (BBB) Learnings after Typhoon Haiyan

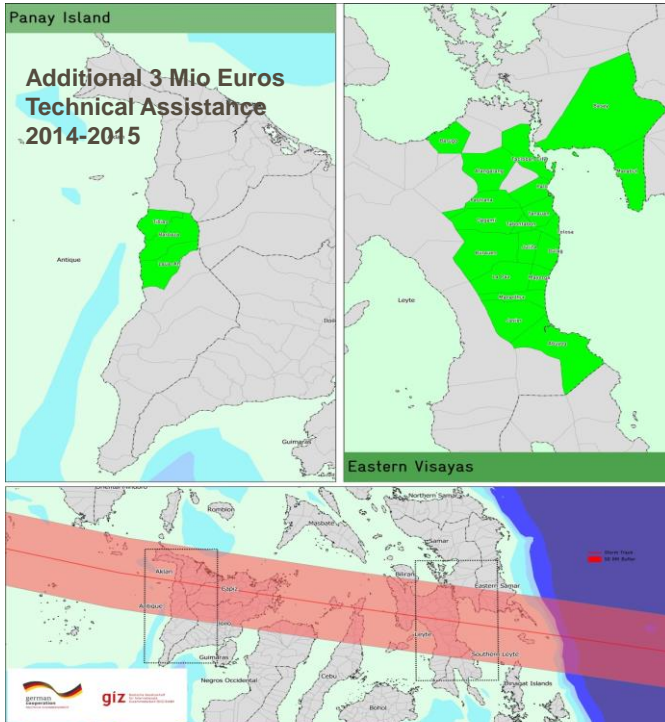
**giz** Deutsche Gesellschaft  
für Internationale  
Zusammenarbeit (GIZ) GmbH



Graphic by the United Nations Office  
for the Coordination of Humanitarian  
Affairs

Page 8





**giz** Deutsche Gesellschaft  
für Internationale  
Zusammenarbeit (GIZ) GmbH

## Support to OPARR, Region 8, 6 Provinces, 25 LGUs

- Basey
- Marabut
- Barugo
- Tacloban City
- Alangalang
- Palo
- Pastrana
- Dagami
- Tabontabon
- Tolosa
- Tanauan
- Julita
- Burauen
- La Paz
- Mayorga
- MacArthur
- Javier
- Abuyog
- Dulag
- Tibiao
- Barbaza
- Lau-an
- Patnongon
- Valderrama
- Belison

Page 9



**giz** Deutsche Gesellschaft  
für Internationale  
Zusammenarbeit (GIZ) GmbH

# 1. Rehab Planning



Page 10

## Linked to.. Provincial Framework Critical Watersheds

**giz** Deutsche Gesellschaft  
für Internationale  
Zusammenarbeit (GIZ) GmbH

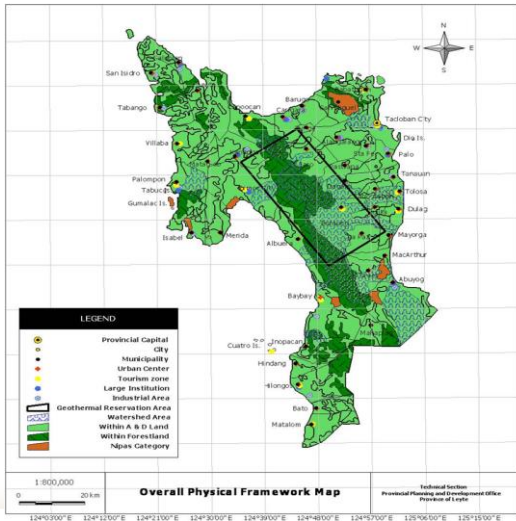


Figure 2: Sample provincial delineation of watersheds/sub-watersheds in Leyte Island

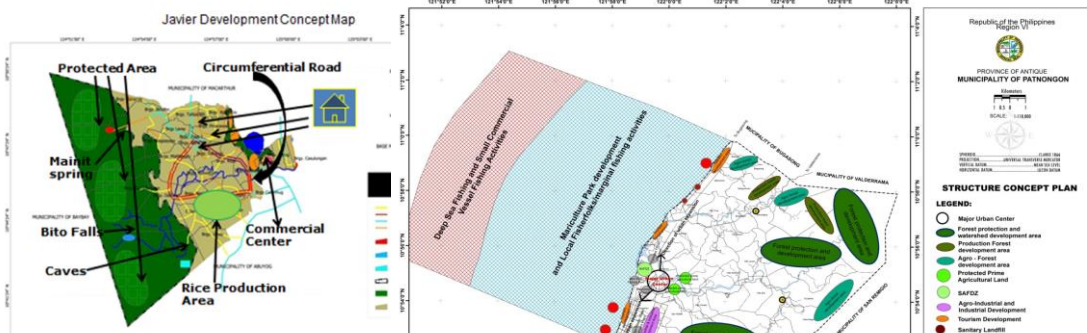
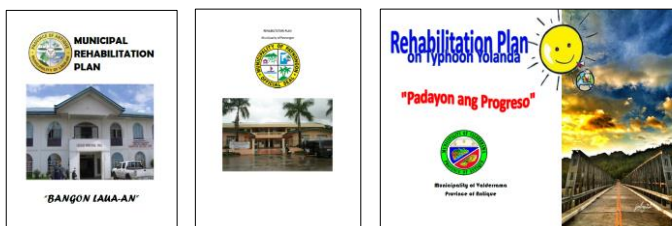


Forum - Region 8

Page 11

## Linked to.. Municipal Development Concept

**giz** Deutsche Gesellschaft  
für Internationale  
Zusammenarbeit (GIZ) GmbH





## PHILIPPINES


**Typhoon Yolanda Ongoing Recovery**  
 Recovery Framework Case Study

**Box 4. The Availability of Updated  
Baseline Data and Development Plans  
Expedites Planning for Recovery**

LRRP Presentation: Leyte (April 26), Tacloban City (May 10), LRRP Approval President: Leyte, Tacloban City (July 25), CRRP Approval President: (Oct 29, 2015)

*"The Rehabilitation Plan became the bases of support of other donors like UNICEF, UNDP."*

Fortunato B. Serafina, MPDC, Mc Arthur

*"Out of the programs identified, around 80-90% in the PPAs were funded for recovery."*

Cecilio Marilla, MPDC, Tolosa

*"(..) Different funding arrived including DILG-Ray 1 plus other projects (...)."*

Engr. Rosalinda A. Alsonado, Mun. Engineer, Javier  
Page 13

## 2. Getting Back to the Feet

### From Rice Farming

**418t Certified rice seeds**  
**5,000 Vegetable Seed Packs**  
**625t Urea fertilizer**  
**2,300t Organic fertilizer**  
**12,179 Beneficiaries**  
**21 Municipalities**  
**25 Irrigators Associations**

### To (Rice) SEED Growing

**20 t certified rice seeds**  
**(Equivalent to 800t certified rice seeds!)**  
**54 Beneficiaries/Recipients**  
**13 Municipalities**  
**3 Seed Grower Associations**



# Selecting beneficiaries and sites

Selecting beneficiaries versus sites

**From Beneficiary..**

**To Producer..**

**From Choice..**

**To System..**

**From Fragmentation..**

**To Scale & Visibility..**

**From Uninsured..**

**To Insured..**

**From Standardized..**

**To Customized..**



## 2. Building Back Better – Where?

### 2.1 From hazard to suitability mapping



**niz** Deutsche Gesellschaft  
für Internationale



# RISK-INFORMED LAND USE PLANNING PROCESS

A Case Study of Abuyog, Leyte,  
Eastern Visayas, Philippines

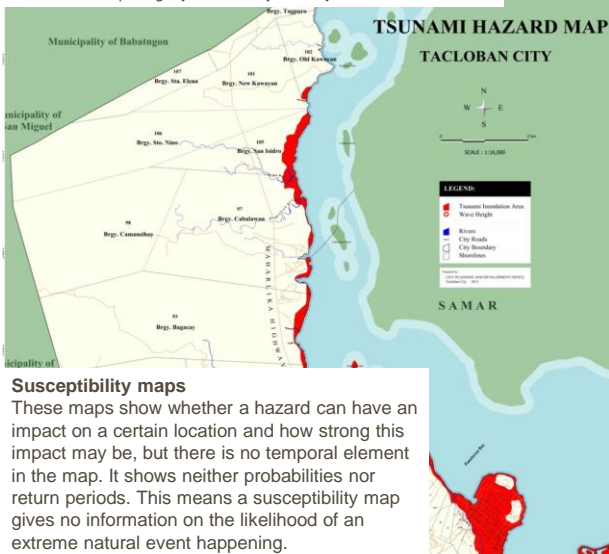


Page 17



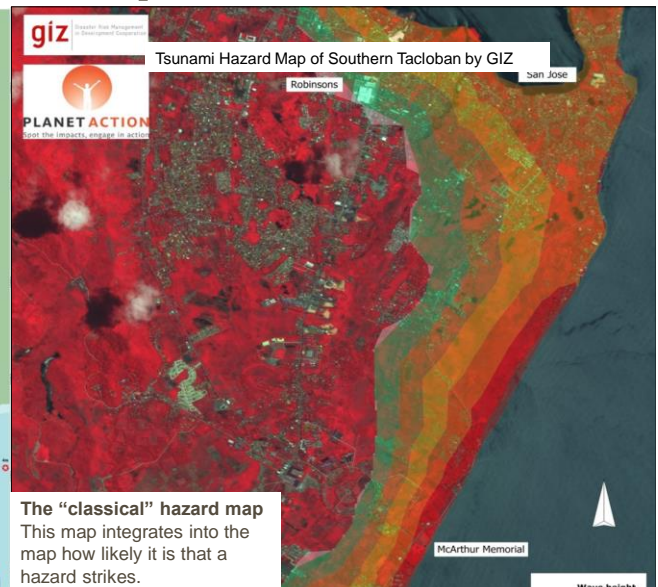
## From (Multi-) Hazard Map

PHIVOLCS map. Slightly modified by the City of Tacloban in 2012



### Susceptibility maps

These maps show whether a hazard can have an impact on a certain location and how strong this impact may be, but there is no temporal element in the map. It shows neither probabilities nor return periods. This means a susceptibility map gives no information on the likelihood of an extreme natural event happening.



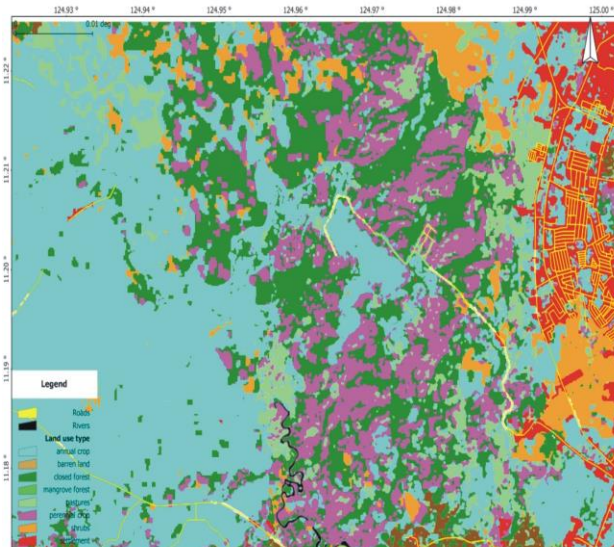
### The "classical" hazard map

This map integrates into the map how likely it is that a hazard strikes.



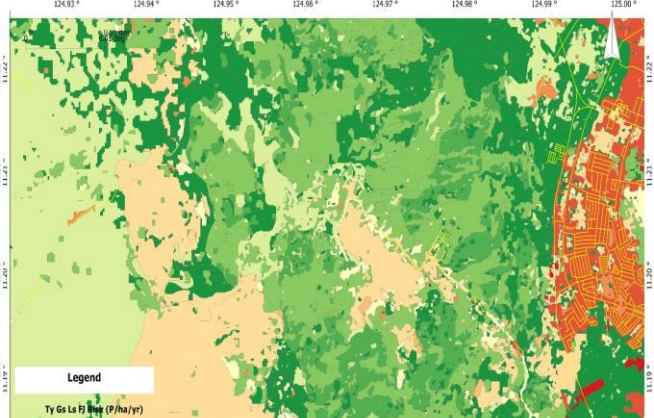
# To Risk Map

Land use map of Tacloban City and the municipality of Palo, Leyte Island



**giz** Deutsche Gesellschaft  
für Internationale  
Zusammenarbeit (GIZ) GmbH

Multi Hazard Risk Map for a part of Leyte



## Risk Maps

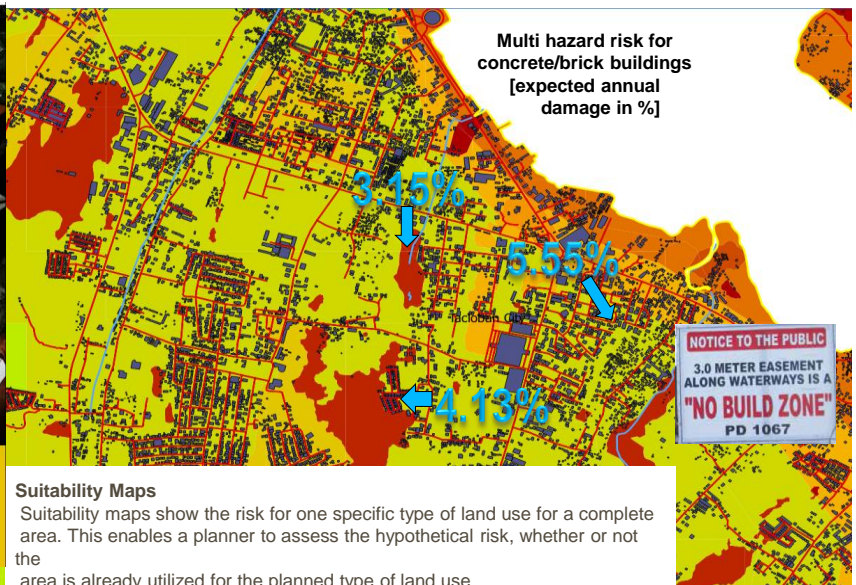
Most risk maps are based on land use. This means the vulnerabilities of different forms of land use (e.g. settlements, forest, crops) are applied depending on a land use map. The resulting risk map shows the expected statistical annual damage per area unit (Pesos/year/ha).

# To Suitability Mapping

**giz** Deutsche Gesellschaft  
für Internationale  
Zusammenarbeit (GIZ) GmbH



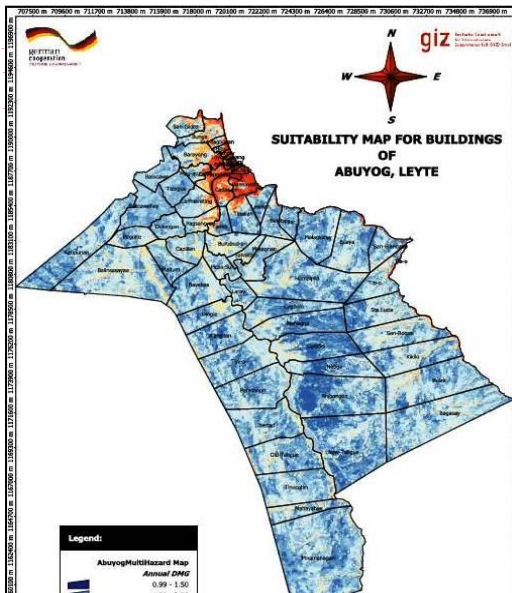
Residential Building Suitability Map for  
Leyte Island, Philippines



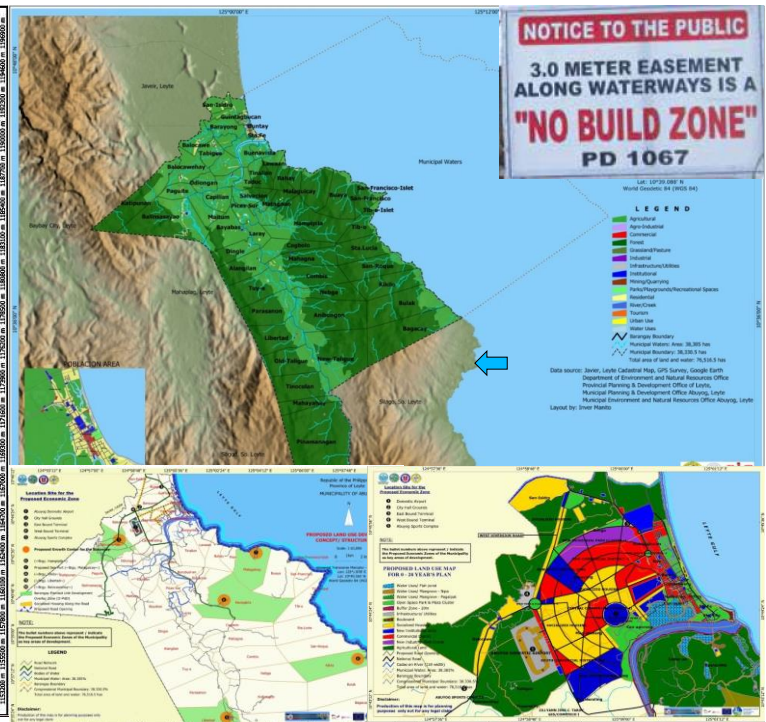
## Suitability Maps

Suitability maps show the risk for one specific type of land use for a complete area. This enables a planner to assess the hypothetical risk, whether or not the area is already utilized for the planned type of land use.





Because of risk-informed CLUPS, the LGU, explore the potential of their territorial jurisdiction with long term disaster resiliency perspective  
Open the mind set of local stakeholders to build LGU alliances based watershed configuration



## What place is suitable for buildings?

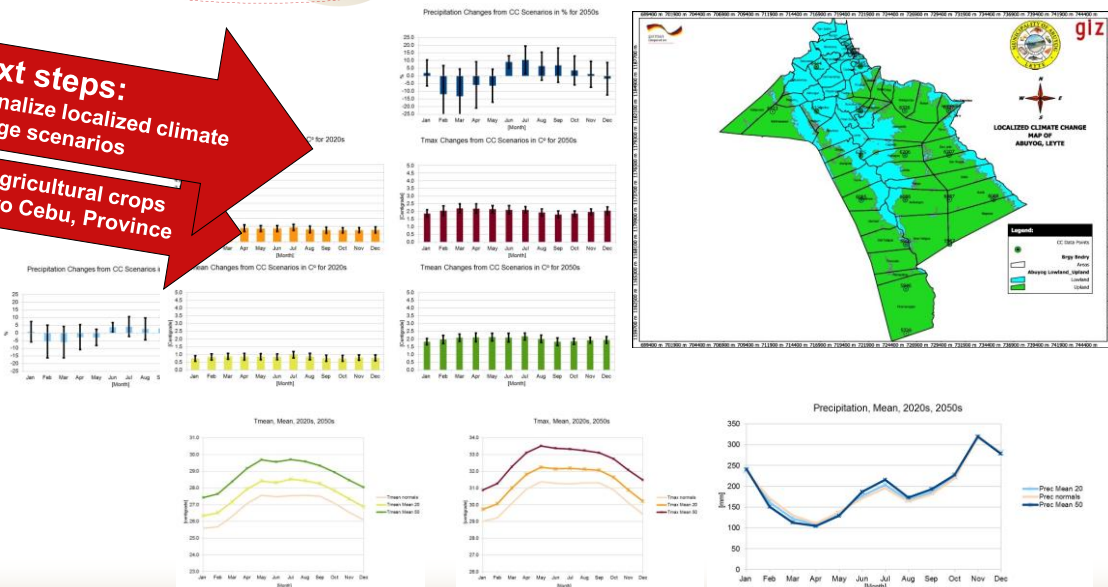


Multi hazard, but only one, simple map for normal residential buildings!



**Next steps:**  
Internalize localized climate  
change scenarios

Add agricultural crops  
> Metro Cebu, Province



4/26/2016

Page 23

## From administrative units to eco-systems

From several eco-systems within **one municipality** to several several **municipalities** within **one eco-system**. From municipalities to eco-systems as planning unit.

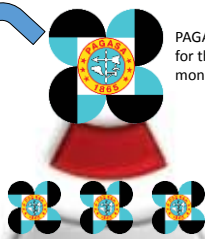
## From Flood Early Warning

From fragmented EW to integrated EW

From technical EW to multi-sensorial EW

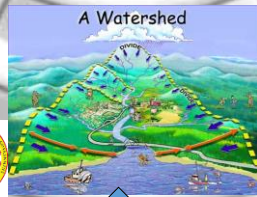
saving lives and empowering people.

PAGASA provided technical assistance to LGUs in organizing and strengthening the NetFLOWS



PAGASA Hydro-met Division is responsible for the **national level** forecasting and monitoring hydro-met related hazards

**PAGASA Regional offices** are responsible for the management, forecasting and monitoring of major river basin (with drainage capacity more than 1,000 sq.km.) in the Philippines



Flood monitoring for small watersheds/river basin was not given priority by PAGASA due to resources and manpower constraints. **Provincial and Municipal/City LGUs** (have to) take responsibility.

SHINE complement LGUs in flood forecasting once technical problem in LFEWS occurs



The entire cooperation mechanism helps NDRRMC in the strengthening of end to end EWS in the Philippines

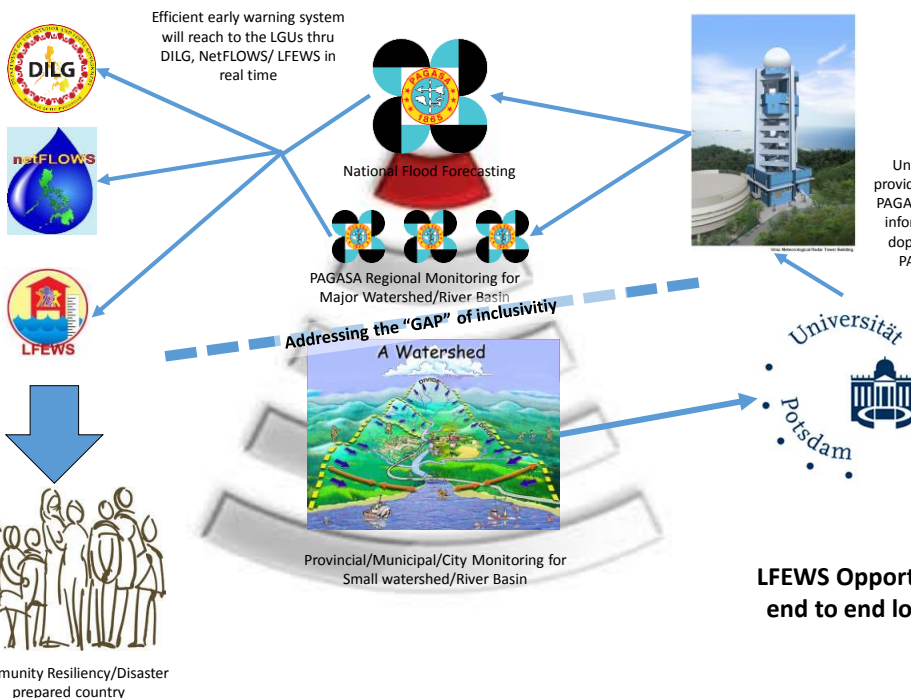
Complement the gap of PAGASA in small river basin

Revised PAGASA warning systems to make LGUs strengthen involvement

Support to PAGASA in upgrading school technological information network as school based risk informed information for weather and flood forecasting

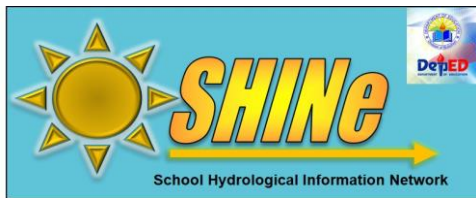


**LFEWS Cooperation Mechanism**



**LFEWS Opportunity to enhance the end to end localized early warning system**





- ❖ The essence of SHINE is disaster awareness through the school's hydrological monitoring activities. It empowers the school and community to protect, prepare and make them resilient against the disastrous effects of floods.

- Enhance the disaster awareness of the school's populace through its regular hydrological monitoring.
- Provide evidenced based weather information system as basis for suspension of classes during occurrence of weather disturbances not classified as tropical storm (where official suspension of classes was raised)
- Develop long-term strategies not only on a school level but national as well based on the data and information collected from the network of observations by the SHINE school groups.



**giz** Deutsche Gesellschaft für Internationale Zusammenarbeit (GIZ) GmbH

**GI:DRM** Global Initiative Disaster Risk Management

### Harmonisation of Early Warning Alert Levels

Alert levels that are currently in use for natural hazards (lowest level: bottom, highest level: top (+ "all clear"))

The public awareness and understanding of early warning alert messages is often compromised by the high variety of schemes, colour codes and pictograms. The growing importance of international business and trade, record high tourist arrivals as well as increased labour migration call not only for national, but also internationally harmonised warning schemes. Investments in early warning systems have improved the detection of approaching extreme natural events significantly in the past years, however, the wide range of warning schemes makes it difficult to disseminate the warning and initiate an effective evacuation and adequate response.

Therefore, it is deemed necessary that warning messages follow consistent colour codes (e.g. green, yellow, orange, red, for increasing dangers, followed by blue for an „all clear“ status) and pictograms. Alert levels in a standardised system will be quickly recognised by the public such as the traffic lights scheme has demonstrated in many countries worldwide. Confusion would be further reduced if multi-hazard early warning systems follow the same numbers of alert levels for different hazards. The alert levels may have different threshold in the respective countries.

Alert Level	General Advice for the Public	Flood	Storm	Tsunami	Volcano	Tornado	Landslide	Avalanche	Wild Fire
1	ADVISE: Be aware and keep up to date	1	1	1	1	1	1	1	1
2	ALERT: For close preparations into action	2	2	2	2	2	2	2	2
3	WATCH & ACT: For final preparations into action	3	3	3	3	3	3	3	3
4	EMERGENCY: Take immediate action for survival	4	4	4	4	4	4	4	4

**UNISDR** The United Nations Office for Disaster Risk Reduction

**PATA** Pacific Area Travel Association

**GI:DRM** Global Initiative Disaster Risk Management

## Hotel Resilient

### Strengthening the Resilience of the Tourism Sector



"Strengthening the Disaster Resilience of Small and Medium Enterprises"

**SME Development and Disaster Resilience in the Philippines**

February 19, 2016 (Friday), 09:30 – 16:30

Sage Function Room, City Garden Grand Hotel  
8008 Makati Ave. cor. Kalayaan Ave., Makati City





# To flood management and mitigation

## Results of Binahaan Flood Modeling Study and Flood Mitigation Options

7<sup>th</sup> TWG Meeting

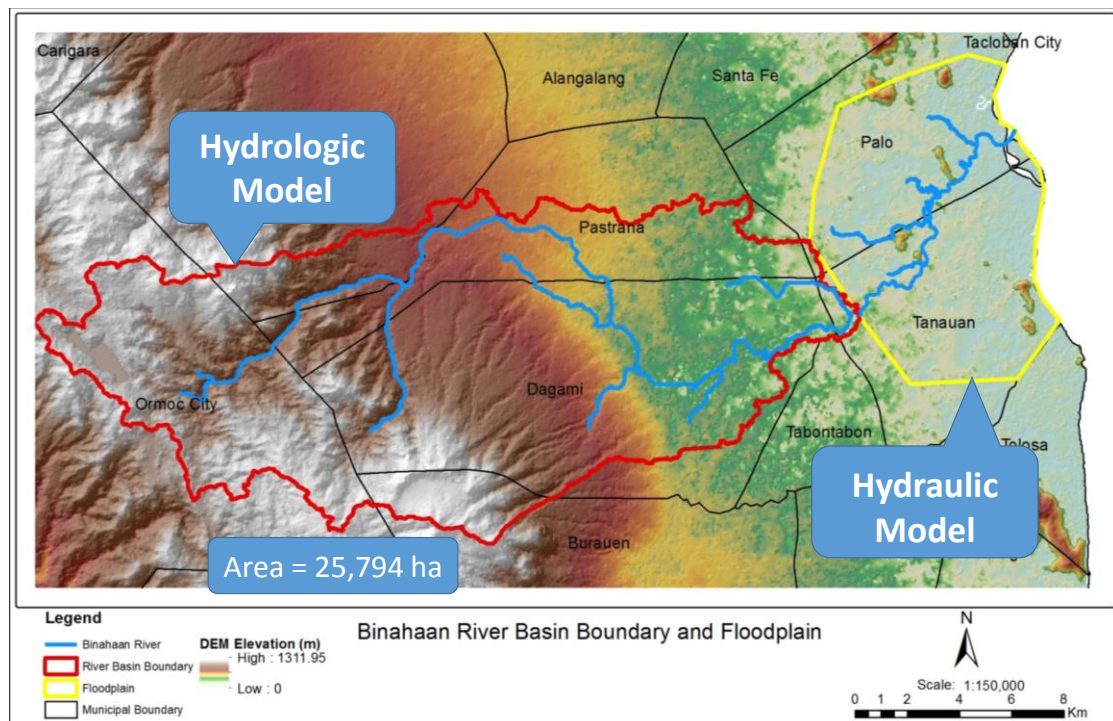
15 April 2016



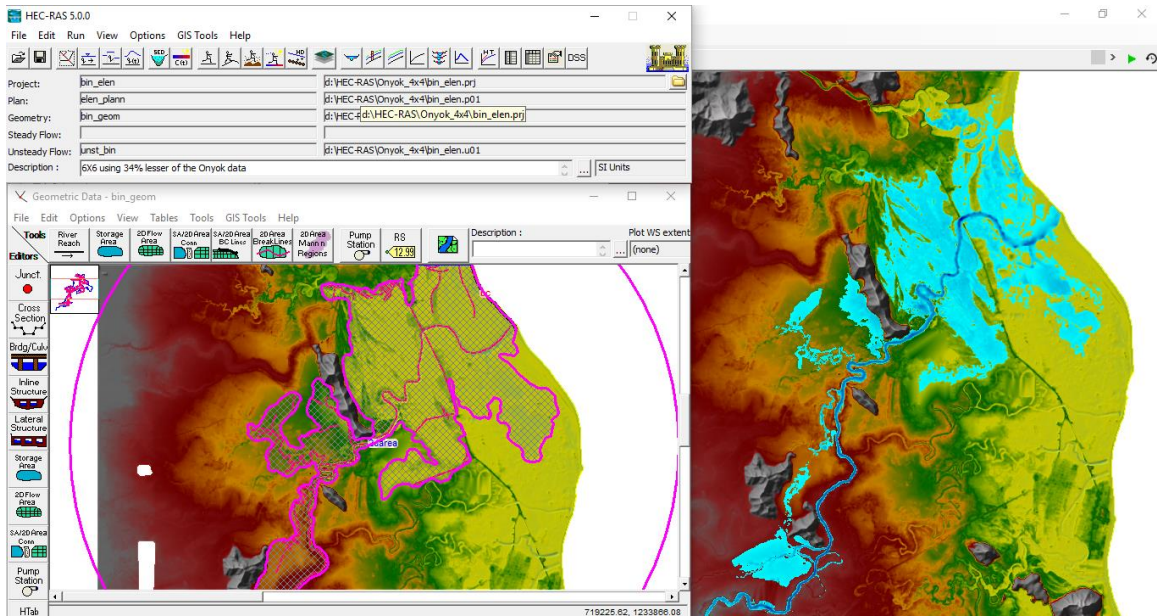
**giz**



Engr. Omar P. Jayag  
VSU Phil-LiDAR 1  
Visayas State University

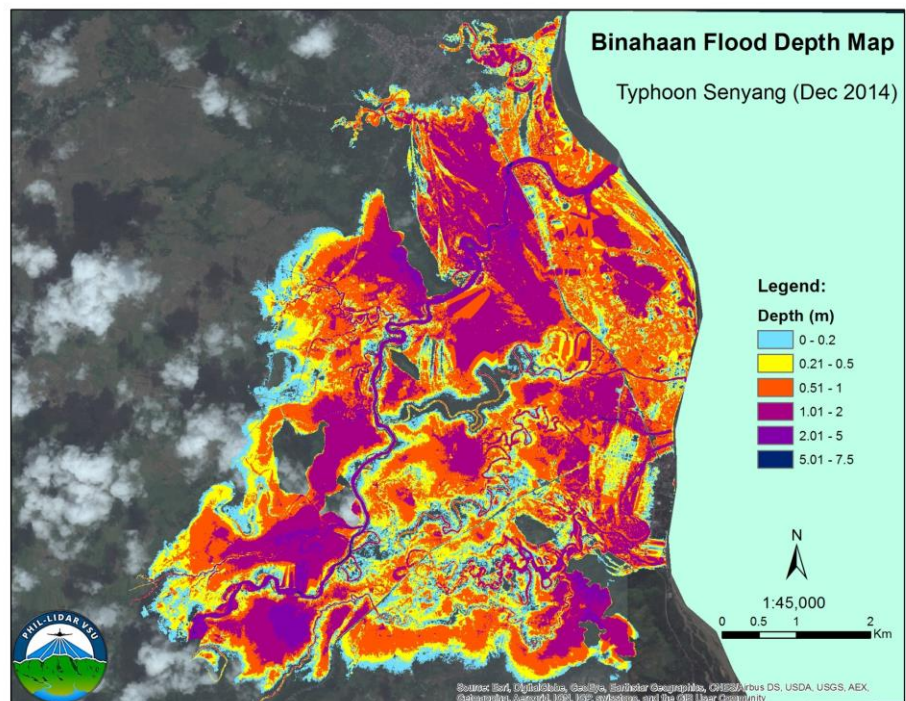


# Validated Hydraulic Model



## Typhoon Senyang Dec 2014

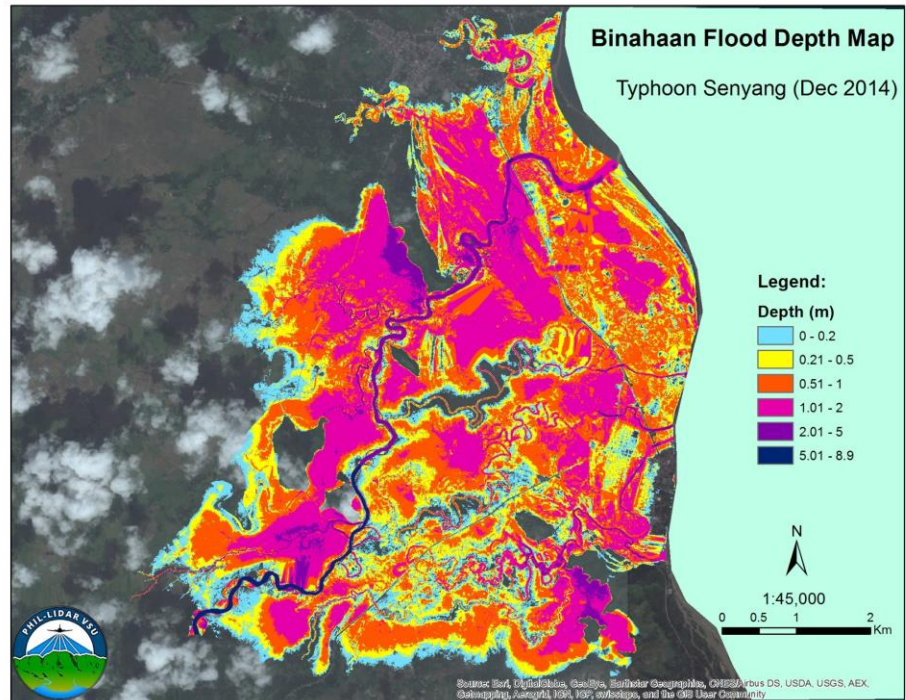
- Max flood extent





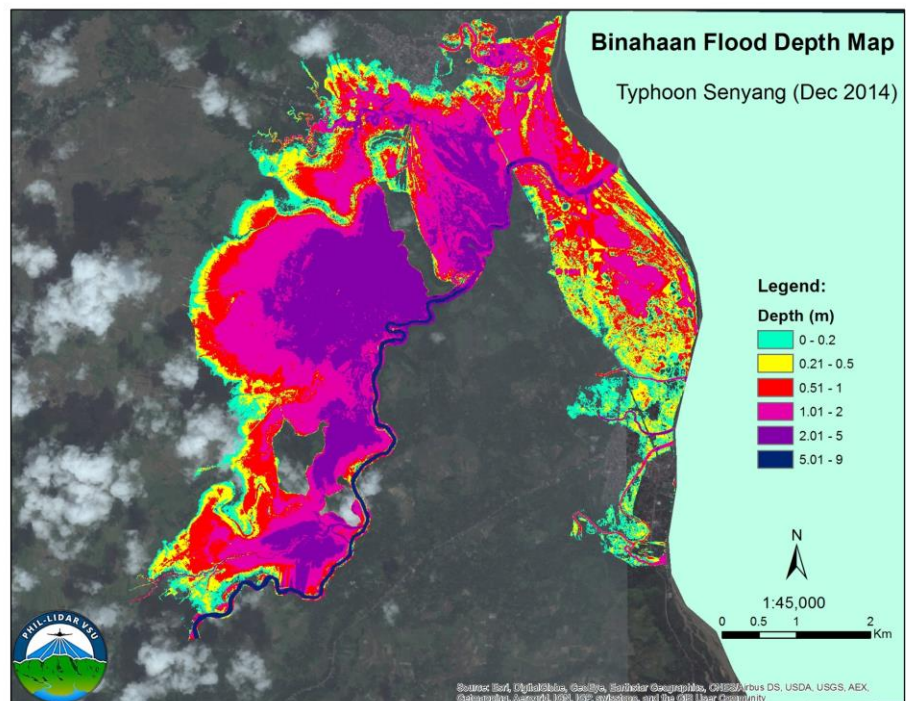
## Typhoon Senyang Dec 2014

- Max flood extent
- Dredging of San Joaquin River



## Typhoon Senyang Dec 2014

- Max flood extent
- Dredging of San Joaquin River
- 2m elevated dike





## 2. Building Back Better – Where?

### 2.2 From ‘have to’ to ‘want to’

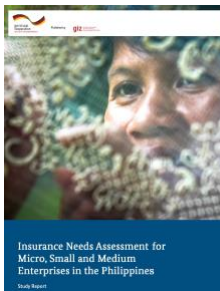


## Regulatory Framework Promotion of Pro-poor Insurance Markets in Asia (RFPI Asia)



### Building Resilience

- **Analysis** of Microinsurance & NatCat
- **Findings** from MSMEs insurance needs assessment
- **Implementation** of a diagnostic toolkit for insurance against NatCat for SMEs





## Claims paid after the typhoon



## 3. Rebuilding – How?

### 3.1 Infrastructure





# Build back better (Infrastructure)

## DILG RAY 1

Up to 3 municipality structures  
Php 2.012 billion

## DILG RAY 3

Up to 3 structures per barangay (!)  
Php 2 billion

KfW, Worldbank, DepEd, JICA, Humedia,.....

Prepared by Architect Ramon L. Abiera, uap

# Build back better

1-5<sup>th</sup> class Municipalities:

1 Position: City/Municipality Engineer

Multiple heads/many assignments

Few (or no staff)

1-2 construction projects per year

	Municipality	Income Classification
Samar Province		1 <sup>st</sup> Class
	Basey (51 brgys)	1 <sup>st</sup>
	Marabut (24 brgys)	5 <sup>th</sup>
Leyte Province		1 <sup>st</sup> Class
	Abuyog (63 brgys)	1 <sup>st</sup>
	Alangalang (54 brgys)	2 <sup>nd</sup>
	Albuera (16 brgys)	3 <sup>rd</sup>
	Babatngon (77 brgys)	4 <sup>th</sup>
	Barugo (37 brgys)	4 <sup>th</sup>
	Bato (32 brgys)	4 <sup>th</sup>
	Baybay City (92 brgys)	
	Burauen (77 brgys)	1 <sup>st</sup>
	Calubian	4 <sup>th</sup>
	Capoocan	4 <sup>th</sup>
	Carigara	2 <sup>nd</sup>

## BUILD BACK BETTER

THIS BUILDING HAVE THE FOLLOWING  
RESILIENT/SUSTAINABLE FEATURES

1. RISK MITIGATION RATIONAL	STRONG WINDS (TYPHOON)
2. INSULATED ROOFING SYSTEM	STRONG WINDS (TYPHOON)
3. CURVE ROOFING	STRONG WINDS (TYPHOON)
4. POSITIVE FIXING, TANDEM FIXING, JTS& LAPPING	STRONG WINDS (TYPHOON)
5. CONCRETE LEDGES AND GUTTERS	STRONG WINDS (TYPHOON)

Prepared by Architect Ramon L. Abiera, uap

# Barangay Hall Template

Fom Overwhelmed >

To Handheld



Prepared by Architect Ramon L. Abiera ,uap

# Barangay Hall Template



Prepared by Architect Ramon L. Abiera ,uap







## Barangay Multi purpose civic center Template

BARANGAY MULTI PURPOSE CIVIC CENTER(features-character same with barangay hall,2 storey with future mezzanine ,size flexible,WITH RESILIENT AND SUSTAINABLE FEATURES

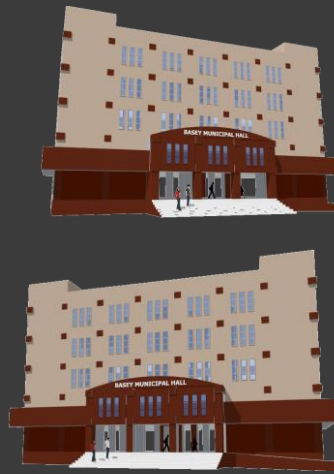


Prepared by Architect Ramon L. Abiera ,uap

# MUNICIPAL Hall



Resilient multi story Municipal Hall



Prepared by Architect Ramon L. Abiera ,uap

# CIVIC /EVACUATION CENTER



Prepared by Architect Ramon L. Abiera ,uap





From vulnerable To resilient

**We know...**

we can't  
prevent a hazard  
from happening

**and we CAN**

**Mitigate the impact**

**And make our communities  
resilient**

Prepared by Architect Ramon L. Abiera, uap

## 3. Rebuilding – How?

### 3.2 Data management



## ESTABLISHMENT OF A GIS WEBMAP SERVER AT THE VISAYAS STATE UNIVERSITY

From Laptop

From Local

From Lay(wo)man

From Fragment

To Server

To Crowd

To Professional

To Aggregate



## BACKGROUND INFORMATION

**Recover and resilience = multi-stakeholder responsibility coordination**

**>> For all cooperation and coordination process accessible, reliable, fast information is extra important. Data compatibility extra important for vertical coordination and cooperation processes (i.e. with national government)!**

Data management must be safe (back-up), Efficient (data is fast converted into information, available fast and reliable) and effectivity (supports cooperation (compatible = can be aggregated), updated..)



Yolanda Yolanda Display Recovery Recovery Project Last Study

### Box 4. The Availability of Updated Baseline Data and Development Plans Expedites Planning for Recovery

A month before the Yolanda disaster, the municipality of Tanauan had updated its baseline data and revisited their Comprehensive Development Plan. This ex ante exercise paved the way for the speedy formulation of its RRP, earning the distinction as the first local government unit to submit their RRP to OPARR.

25. **Some LGUs benefitted from technical assistance to formulate their recovery and rehabilitation plans.** In the absence of relevant government guidelines, many took the form of development plans wherein planned investments or activities do not operationally separate recovery, response, and long-term development. The level of technical rigor applied in the crafting of local recovery plans is uneven across LGUs, depending on whether the LGU had access to technical assistance from external partners. In many cases, the local recovery plans reflected 'wish lists' of all needs, and as such, prioritization has been critical to inform local resource allocation and implementation. These factors prompted OPARR to subject all plans to a vetting process to enable the

their Comprehensive Development Plan. This ex ante exercise paved the way for the speedy formulation of its RRP, earning the distinction as the first local government unit to submit their RRP to OPARR.

LRRP Presentation: Leyte (April 26), Tacloban City (May 10), LRRP Approval President: Leyte, Tacloban City (July 25), CRRP Approval President: (Oct 29, 2015)

**"The maps generated before the Yolanda disaster with the help of EnRD served as reference for the Municipality in COORDINATING rehabilitation efforts of other NGOs and CSOs."**

Verwena C. Bibar, Executive Assistant to the Mayor, Alang-Alang

**"The EnRD supported hazard maps have also been useful to various development partners such as World Vision, UNICEF, KALAH, OPAR, DENR-MGB in their rehabilitation efforts."**

Antonio L. Varona, MPDC, Alang-Alang

**"Big help, if it were not for the approved rehabilitation plan, the identified LGU projects for rehabilitation will not be incorporated / highlighted for funding by the Provincial Government and the National. Because of it, funds are pouring in."**

Ms. Meldy B. Adel, MPDC, MDRMO, Basey

**"For me it was like a can opener, because a lot of funds were poured in after the Rehabilitation Plan was formulated."**

Joeban R. Paza, MDRMO, Burauen

**"The LGU was able to gather around 23M grant of Farm to Market Road (with 2M counterpart): all because of the Rehabilitation Plan that GIZ has supported."**

Adleo C. Go, MPDC, Dagami

**"We are very thankful (..) We have hoped that GIZ was able to help more LGUs as Capoocan for example was not able to formulate a rehabilitation plan as no other agency provided support in rehabilitation planning at that time."**

Judith M. Borrel, MPDC, Barugo

**"We are satisfied with the quality of rehabilitation plan (..). We are aware that it is not a perfect plan but EnRD helped us meet the demands and urgency of the situation at that time especially that all of us were in distress and were demanded by various agencies to perform our functions"**

Roger S. Ramos, MPDC, MEO, Tabon-Tabon



## Collaborative efforts in the Binahaan Watershed..

***"The maps generated before the Yolanda disaster with the help of EnRD served as reference for the Municipality in COORDINATING rehabilitation efforts of other NGOs and CSOs."***

Verwena C. Bibar, Executive Assistant to the Mayor, Alang-Alang

Project: Philippines: IWRM Tools, Guidelines; and Capacity Building

Training on Application of the IWRM Planning guidelines for the Binahaan Basin

Organizers: UNESCO-IHE, Deltares, DPWH-IWRMCT, UP-NHRC

Date: 1 December to 4rd December, 2015

Venue: To be decided (Palo Leyte)

Details on the Program and Contents (Tentative)

Date/Day	Time Table	Topic/Activity	Resource persons
Tuesday, 1st December	08:30-09:00	Welcome and Opening	To be decided/Roy/D



Development of a coastal protection strategy for Tacloban and Palo

Workshop 2 Stakeholders & LGUs

George Peters, Claartje Hoyng, Bert Smolders, Wouter de Hamer, Arne Jensen, Gen de Jesus, Johan Gauderis, Bryan, Marylene Labitan  
19 April 2016

<http://gisserver.vsu.edu.ph>

## MAIN PAGE OF VISAYAS STATE UNIVERSITY WEBGIS



Visayas State University WebGIS

VSU WebGIS Portal | Map Catalog Creation

Data Upload | Web Mapping Service and Metadata

Map Catalog to Portal Registration | Map Layer to Catalog Registration

Users and Data Access Privileges | Maintenance and Views

Logout (Change ID/Register) | Users Group Registration

Current User: guest

The main page allow guest or public user to view the map in which is publicly shown by the map or data owner.



<http://gisserver.vsu.edu.ph>

## WORKSHOP OUTPUT (FEBRUARY 28-29, 2015)

## WHAT DATA/INFORMATION DO YOU WANT TO GET FROM THE WEB SERVER?

- High resolution maps
- Map analysis / data analysis
- LIDAR remote sensing data
- LIDAR maps and data → watersheds
- Hazard maps
- Cadastral maps
- Existing and proposed infra facilities
- Academic researches,
- Journals on LAM (local, international)
- Flood, Storm surge, Tsunami modelling
- Accessibility / availability to appstore / android
- Online-courses
- "Forum" section
- Good practices
- Maps should be HLURB compliant
- Municipal profile of every LGU
- Weather data → localized, ???
- Climate data (past & projection)
- Accurate weather update (intelligible to all)-Flood, Storm surge, Tsunami modelling
- Accessibility / availability to appstore / android



## WORKSHOP OUTPUT (FEBRUARY 28-29, 2015)

## 2. IF THE LGUs ARE TO SHARE DATA & INFORMATION, WHAT ARE THESE DATA?

- Spatial framework
- Strategy & investment thrusts
- Potential (existing & proposed)
- Tourism development
- Business investment sites
- Real estate development
- Development plans
- LGU proposals (project proposals)
- Pool of expert
- Agriculture & fishery data
- CBMS / LGPMS data (socio-economic data)
- LGU proposals (project proposals)
- Pool of expert
- Agriculture & fishery data
- CBMS / LGPMS data (socioeconomic data)



WORKSHOP OUTPUT (FEBRUARY 28-29, 2015)

### 3. WHAT ARE THE PRE-CONDITIONS IN SHARING THESE DATA/INFORMATION?

- Account limit per LGU
- Individualized account
- Equal sharing of income
- Data security
- Copyright file system
- Training webserver management



## 3. Rebuilding – How?

### 3.3 Insurance Protection

**From insuring the past..**

What we have accumulated  
in the past

**To insuring the future..!**

What does it take to start  
all-over again





## Regulatory Framework Promotion of Pro-poor Insurance Markets in Asia (RFPI Asia)



**giz** Deutsche Gesellschaft für Internationale Zusammenarbeit (GIZ) GmbH

### Building Resilience

- **Analysis** of Microinsurance & NatCat
- **Findings** from MSMEs insurance needs assessment
- **Implementation** of a diagnostic toolkit for insurance against NatCat for SMEs



26/04/2016

Page 61

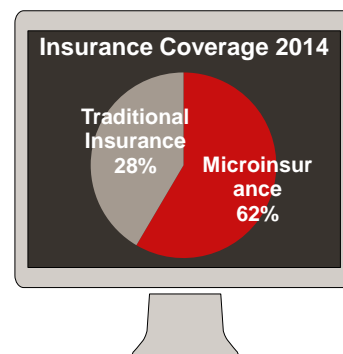
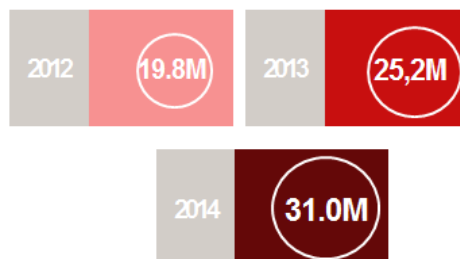


german  
cooperation  
DEUTSCHE ZUSAMMENARBEIT

Implemented by

**giz** Deutsche Gesellschaft für Internationale Zusammenarbeit (GIZ) GmbH

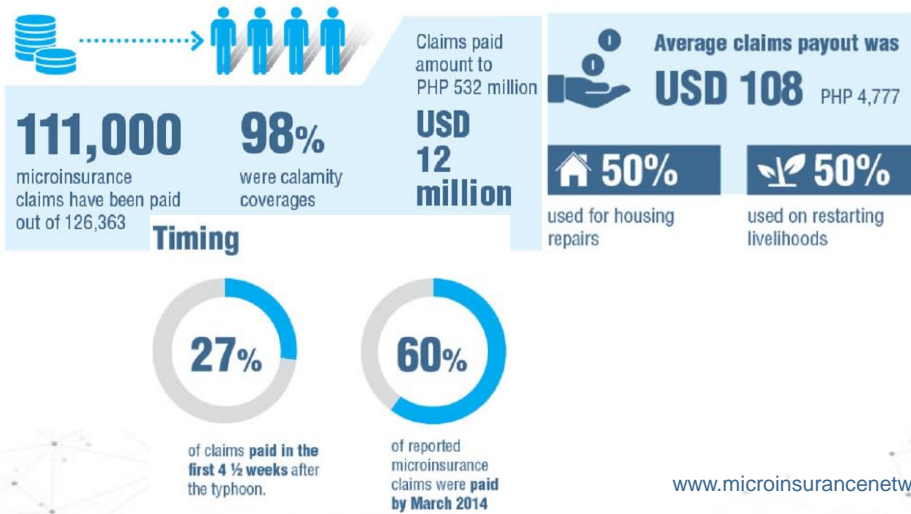
## Microinsurance is growing!



Source: Insurance Commission Philippines

Page 62

## Claims paid after the typhoon



## 3. Rebuilding – How?

### 3.4 Economic Life (and financing)



# Philippine Administrative System

2 sources (!) of public funding!



Implemented by

**giz**

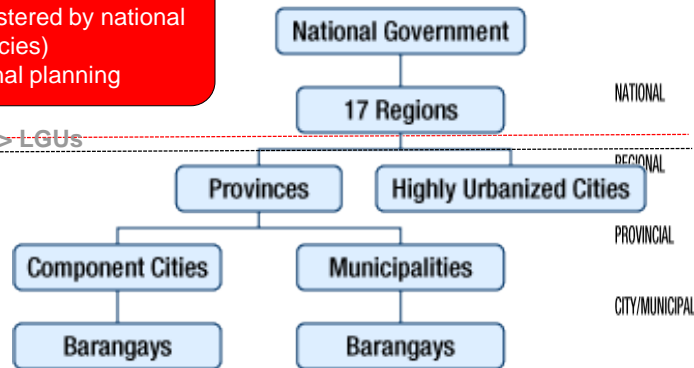
Deutsche Gesellschaft für Internationale Zusammenarbeit (GIZ) GmbH

Gesellschaft für Internationale Zusammenarbeit (GIZ) GmbH

**Public funds source 1: National Government (GA)** Administered by national government (by line agencies)  
Allocated based on regional planning

**V Total NLA > LGUs**

**Public funds 2:** Local Government (IRA) Administered by LGUs (Province, Cities, Municipalities)  
Allocated based on local planning



Physical Plans	Socio-economic Plans
National Framework for Physical Planning	Medium Term Phil. Dev't Plan
Regional Physical Framework Plan	Regional Dev't Plan
Provincial Development and Physical Framework Plan	
Comprehensive Land Use Plan	Comprehensive Dev't Plan

Page 65



REPUBLIC OF THE PHILIPPINES  
NATIONAL ECONOMIC AND DEVELOPMENT AUTHORITY

## MONITORING the YOLANDA RECOVERY & REHABILITATION

5<sup>TH</sup> Regional Business Conference  
31 July 2015  
CCE Hall, VSU, Baybay City

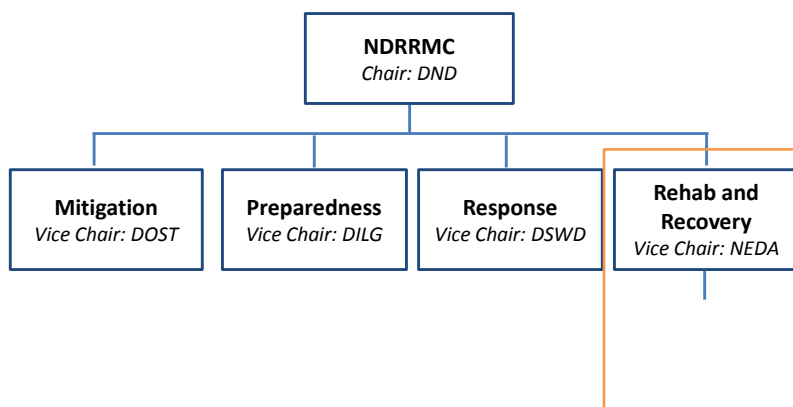




Memorandum Order No. 79, s. 2015

# Institutional Framework

## NEDA Secretary as Vice Chair of NDRRMC\*



\*National Disaster Risk Reduction and Management Council



## Formulation of the EASTERN VISAYAS RESULTS FRAMEWORK FOR RECOVERY & REHABILITATION

1

Annex 2

### Typhoon Yolanda Results Framework for Recovery and Rehabilitation

The following results framework is based on the Results Matrices of the Updated Philippine Development Plan (PDP) and Regional Development Plans for 2011-2016, as well as the Comprehensive Rehabilitation and Recovery Plan (CRRP) for Yolanda.

Unless otherwise specified, specific to Yolanda-affected areas. Missing data and other updates will be reflected in subsequent editions of this document, which will be made available in the NEDA website (<http://www.neda.gov.ph>).

RESULT	PERFORMANCE TARGETS AND INDICATORS	BASELINE	SHORT-TERM (2014)	MEDIUM-TERM (2015-2017)	DATA SOURCES AND REPORTING MECHANISMS	ASSUMPTIONS AND RISKS
<b>Philippine Development Plan (PDP) Objective*</b> Poverty reduction and creation of quality employment, with equal development opportunities for women, children and men (spatially, sectorally focused strategies).						
<b>Impact (long-term)</b> Sustainable, resilient regions affected by Yolanda with high and sustainable growth, able to withstand and recover from disasters faster and better	Per capita GRDP in the affected areas restored to pre-typhoon levels (Baseline: average growth rates 2002-2012) GRDP growth rates achieve national PDP targets	*	*	*	NEDA NEDA GRDP reports	<b>Assumption:</b> Continuing budgetary resources are made available in a timely and sufficient manner to meet recovery and rehabilitation needs.
	Reg. IV-B: MIMAROPA (%) <sup>a</sup>	4.2	3.2-4.2	5.2-6.2	NEDA, PSA	<b>Assumption:</b> External environment remains positive and conducive to growth.
	Reg. VI: Western Visayas (%) <sup>a</sup>	7.5	6.1-7.5	7.3-8.8		<b>Risks:</b> Other disasters arising from natural hazards may again hit the regions and reverse gains.
	Reg. VII: Central Visayas (%) <sup>a</sup>	9.3	8.9-11.2	10.1-12.5		
	Reg. VIII: Eastern Visayas (%) <sup>a</sup>	-6.2	4.5-5.5	4.6-5.6		

\* Source: Philippine Development Plan 2011-2016 Midterm Update with Revalidated Results Matrices

\* Values to be determined



OMIC AND  
THORITY



**Republic of the Philippines**  
**DEPARTMENT OF ENVIRONMENT AND NATURE RESOURCES**  
**NATIONAL INTEGRATED PROTECTED AREAS SYSTEM**

**REC 100-Declaration No. 1, Series of 2011**

**APPROVING THE INSTITUTIONAL FRAMEWORK FOR THE**  
**CONSERVATION AND MANAGEMENT OF THE**  
**WATERSHED OF THE MOUNTAIN PROVINCE**

Commission, International Decade of the Mountains, and the President on 20 April 2011, and the Department of Environment and Natural Resources (DENR) in monitoring and evaluating the implementation programs, projects and activities of the Mountain Province Watershed Conservation and Management Program.

Moreover, Section 1 of DENR E-9 Factor states that the DENR shall conduct the following activities: (a) conduct research and monitoring; (b) conduct impact assessment; (c) conduct watershed planning; (d) conduct watershed management; (e) conduct watershed rehabilitation; and (f) conduct watershed conservation.

Moreover, in implementing the NIPAS, the DENR Regional Office II proposed the following:

1. The implementation and coordination mechanism for the DENR Division Office Cagayan de Oro (DENR DO CO) shall be with the existing DENR DO CO Watershed Management Committee (WMC).
2. A similar coordination mechanism for the DENR DO Zamboanga City (DENR DO ZC) shall be with the existing DENR DO ZC Watershed Management Committee (WMC).
3. The monitoring and maintenance system of the watershed under the DENR DO Zamboanga City shall be with the DENR DO ZC Watershed Management Committee (WMC).

Moreover, the DENR DO Zamboanga City previously conducted an efficient watershed management system for the DENR DO Zamboanga City. It is noted that DENR DO Zamboanga City has a Watershed Management Committee (WMC) report that is provided on 10/12/2010.

Moreover, the DENR DO Zamboanga City is a member of the Council on Solid Wastes (CSW) and DENR DO Zamboanga City has been approved by the approval of the DENR DO Zamboanga City.

**NOTE: THEREFORE, upon the review of REC 100-Declaration No. 1, Series of 2011, the DENR DO Zamboanga City is hereby approved to implement the Watershed Conservation and Management Program of the DENR DO Zamboanga City.**

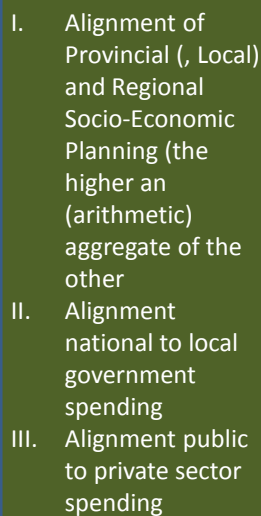
**APPROVED:**

Director, DENR Regional Office II

Director, DENR DO Zamboanga City

Date: 10/12/2010

CHAIR: NEDA  
CO-CHAIR: OPARR & OCD  
MEMBERS: RPMC Members



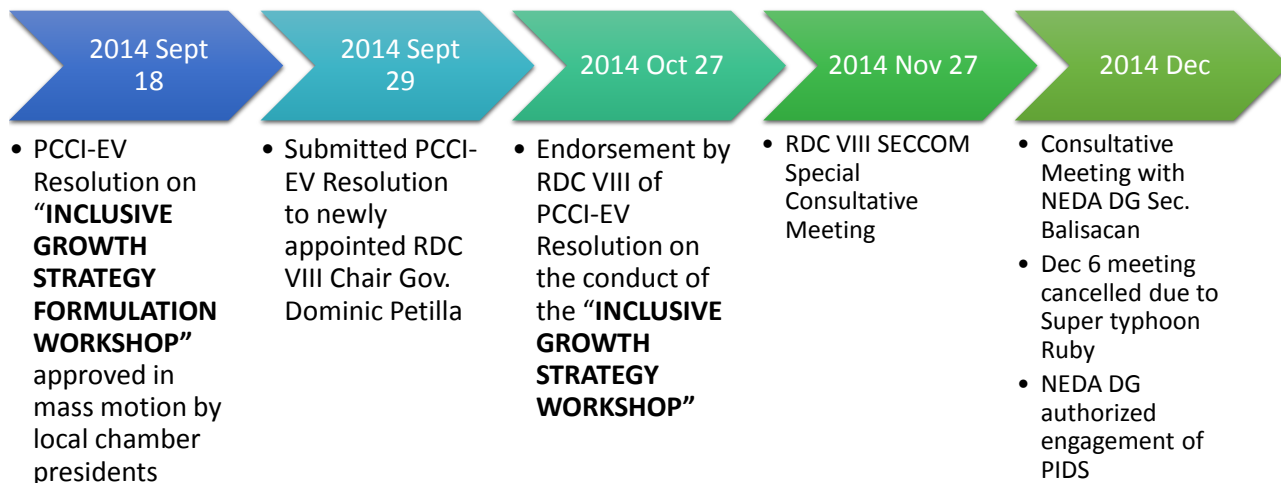




Philippine Chamber of Commerce and Industry - Eastern Visayas

## BUSINESS RECOVERY CENTER

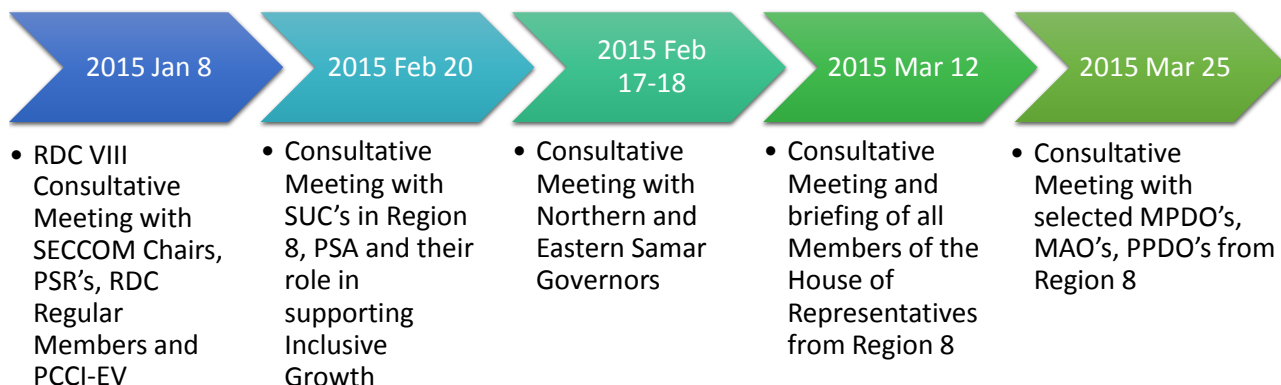
### INCLUSIVE GROWTH WORKSHOP TIMELINE



Philippine Chamber of Commerce and Industry - Eastern Visayas

## BUSINESS RECOVERY CENTER

### INCLUSIVE GROWTH WORKSHOP TIMELINE





Philippine Chamber of Commerce and Industry - Eastern Visayas

## BUSINESS RECOVERY CENTER

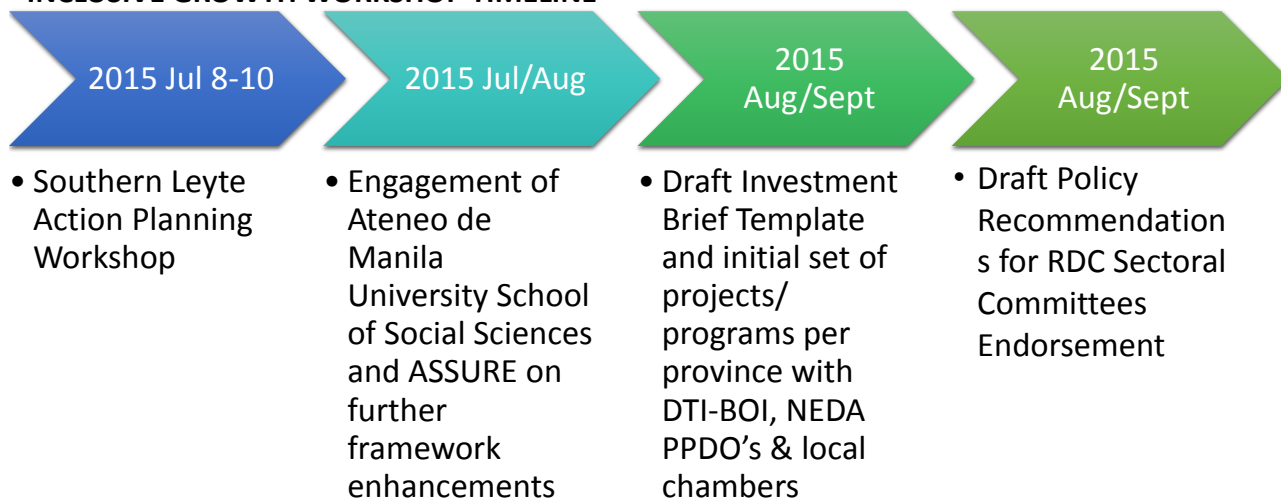
### INCLUSIVE GROWTH WORKSHOP TIMELINE



Philippine Chamber of Commerce and Industry - Eastern Visayas

## BUSINESS RECOVERY CENTER

### INCLUSIVE GROWTH WORKSHOP TIMELINE

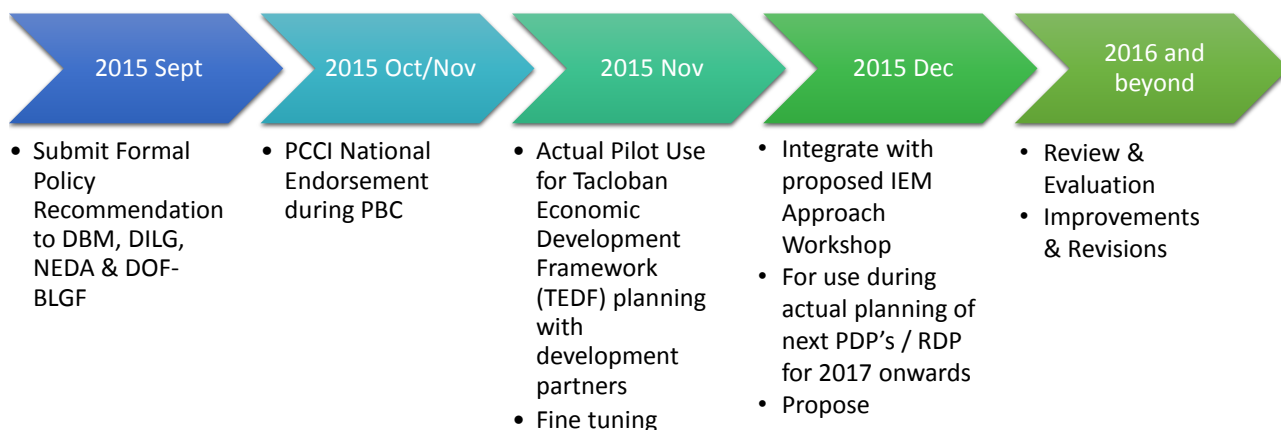




Philippine Chamber of Commerce and Industry - Eastern Visayas

## BUSINESS RECOVERY CENTER

### INCLUSIVE GROWTH WORKSHOP TIMELINE



Philippine Chamber of Commerce and Industry - Eastern Visayas

## BUSINESS RECOVERY CENTER

### METHODOLOGY FOR PRIORITIZATION OF ECONOMIC PPA'S BASED ON INCLUSIVE GROWTH

#### I. WHAT IS HINDERING INCLUSIVE GROWTH?

PUSHING FACTOR	HINDERING FACTORS	POSSIBLE SOLUTION
What current factors in my area promotes inclusive growth?	What are the challenges/problems the hinder inclusive growth?	(per hindering factor)

#### II. CREATE AN OPERATIONAL ACTION AGENDA

ACTION AGENDA (KRAs)	STRATEGIC OBJECTIVES	INDICATORS (quota/measures)	ACTION TO TAKE/ACTIVITIES	TIMELINES	RESPONSIBLE PARTNERS	REQUIREMENTS/REMARKS





Philippine Chamber of Commerce and Industry - Eastern Visayas

## BUSINESS RECOVERY CENTER

### III. PRIORITIZING ACTIVITIES = INCREASE PRODUCTIVITY

SECTORS	CRITERIA FOR SELECTION PRIORITIZATION			STRATEGIC OPTIONS	
	COMPETITIVE ADVANTAGE	CONTRIBUTION TO ECONOMIC GROWTH	CLIMATE CHANGE RESILIENCY	TYPE OF ACTIVITY	SPECIFIC REQUIREMENTS
AGRICULTURE / FISHERIES	Why do people buy from me instead of my competitors? What makes me different and better?	How much will household income/month increase? (Low/Medium/High)	(Low/Medium/High)	<ul style="list-style-type: none"> <li>• INTENSIFY?</li> <li>• EXPAND?</li> <li>• DIVERSIFY?</li> </ul>	
INDUSTRY / MANUFACTURING					
TRADE & SERVICES					



Philippine Chamber of Commerce and Industry - Eastern Visayas

## BUSINESS RECOVERY CENTER

### WAYS FORWARD

#### • ACTION PLAN:

- ✓ PILOT USE of Inclusive Growth Framework In Actual Planning For Tacloban North Economic Development Framework (TEDF)
  - Supported by a multi-stakeholder core planning team: UNDP, OXFAM, GIZ, Chamber and other INGO's/Development Partners
- ✓ PILOT INTEGRATION of TEDF with new CLUP (based on the new Enhanced CLUP Guidelines)
- ✓ PILOT INTEGRATION with Integrated Ecosystems Management Approach Workshop



## ILLUSTRATING, MODERATING, INTEGRATING the INTERPLAY IN A SPATIAL DIMENSION

Page 81



# Thank you

Page 82