



Tools and Innovations – Risk Based Spatial Planning

Jamaica's Experience

Presenter: Marsha Martin,
Hazard Mitigation and Risk Management,
Ministry of Local Government and Community Development
May 22, 2017

Context

- Historically, planning guided by Town and Country Planning Act with development order instruments since 1957. Spatially covered only coastal areas only.
- Population concentrated in towns within the coastal zone. Rural farming communities in the interior not covered.



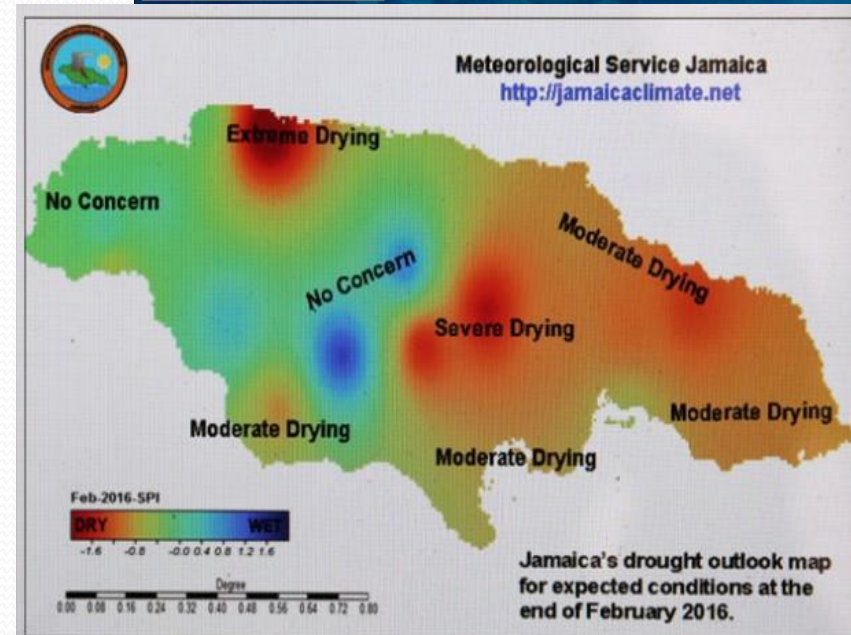
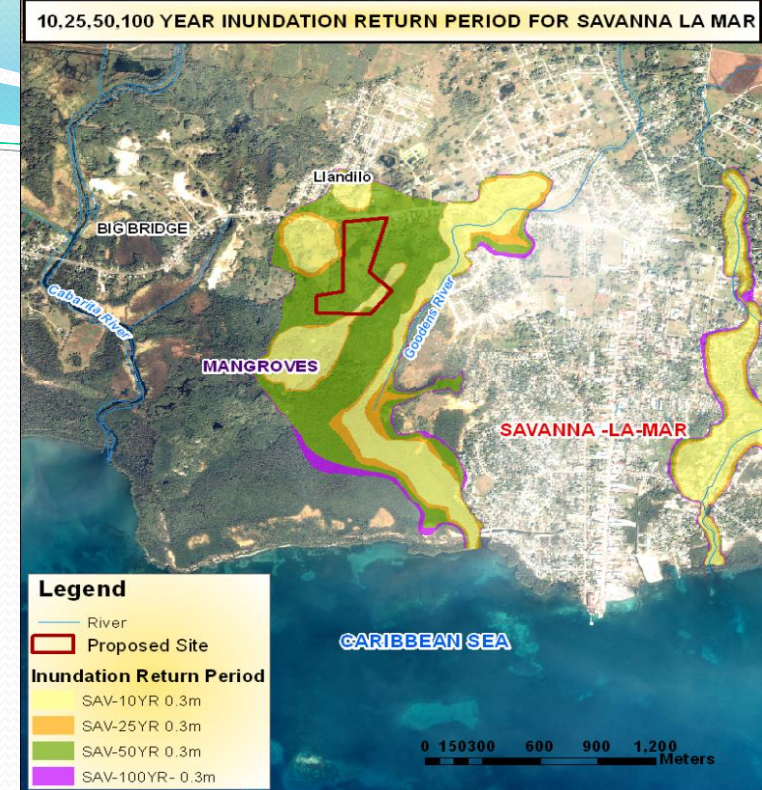
Experiences

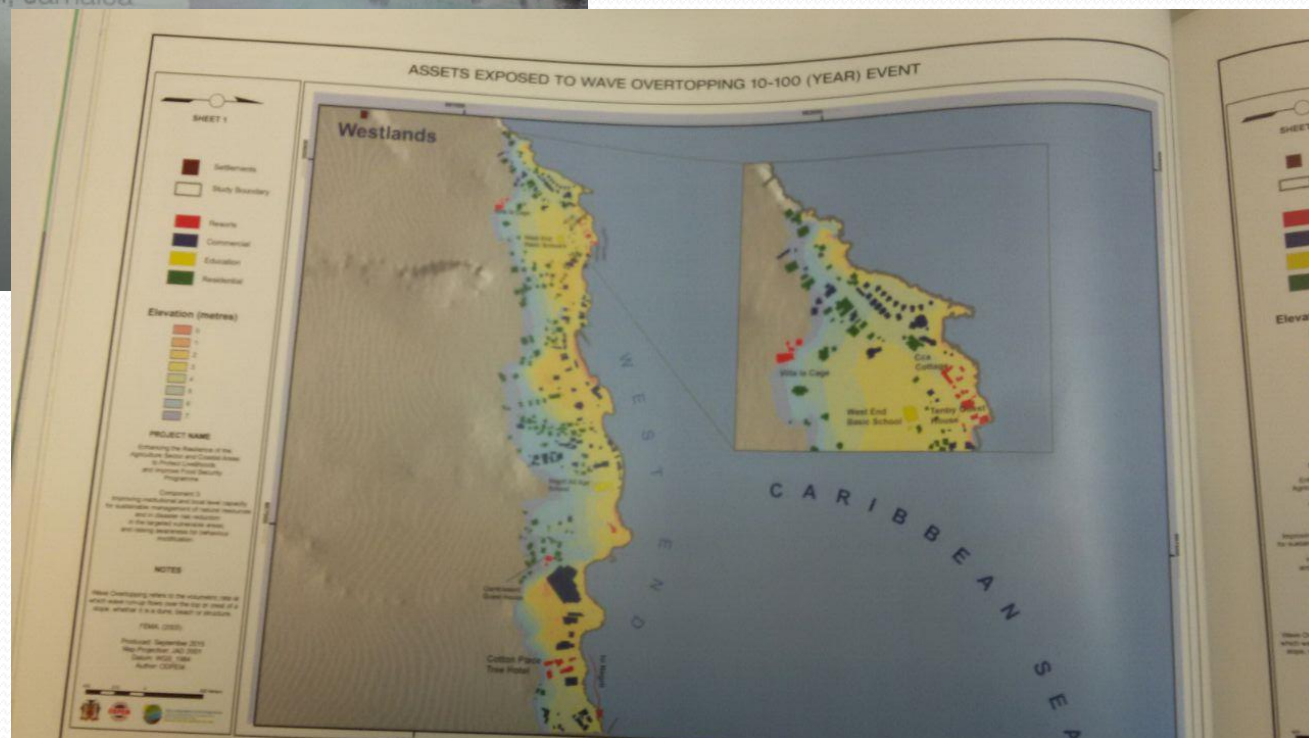
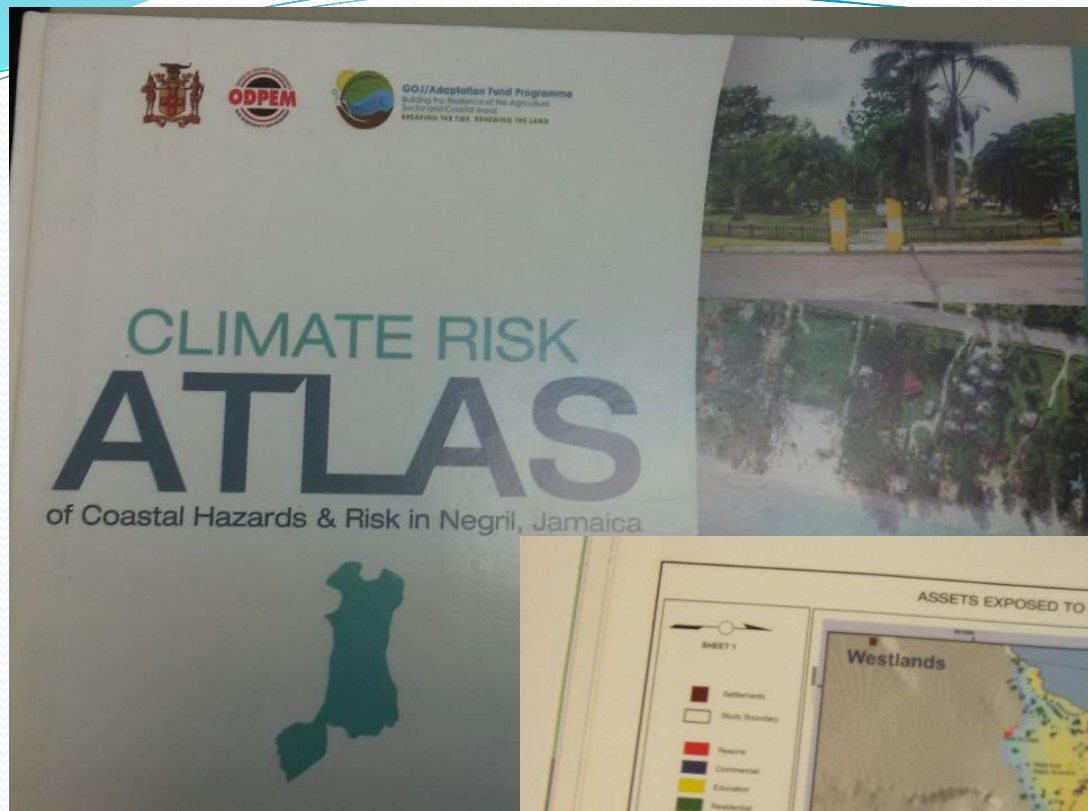
- Illegal and informal settlements located in vulnerable areas are affected by geomorphological and hydro meteorological events;
- Communities in approved areas are also impacted by hurricanes, tidal surges and changes in the coastline.



Actions

- New and proposed legislation
- Disaster risk information platform
- Pre/Post impact assessment and mapping
- Partnership with knowledge centres for risk and vulnerability maps
- Updating development orders
- Local sustainable development plans
- Risk reduction management centres





Challenges and Opportunities

- Cost/benefit of relocation and compensation
- Establishment of no build zone
- Socio economic character of communities and preferences in location
- Legislative approval process
- Data sharing

THE END