

Building Community Resilience

through

Ecosystem Conservation

and

Coastal Adaptation

Commandant K. Servansing

**National Disaster Risk Reduction & Management Centre
MAURITIUS**

Coastal Impacts in Mauritius



Ecosystem Conservation

Banning Sand Mining

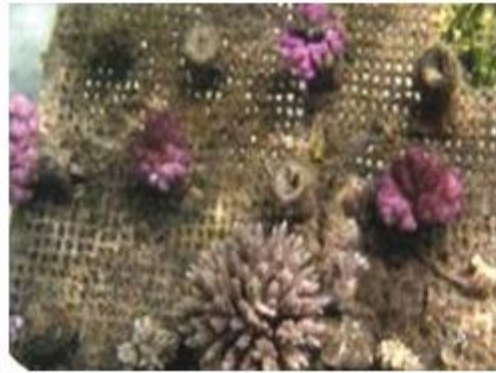
- Sand Mining Act of 1975, extraction: 800,000 tonnes per year
- Unequivocal that sand is a very slowly renewable resource



- Government decided to **ban sand mining in October 2001**
 - Measures to minimise economic impacts on Construction:
 - Replace coral sand with basalt rock sand
 - Measures to minimise social impacts:
 - Compensation to ex-sand miners to the tune of Rs 200,000 (USD 6667)
 - Capacity building on alternate employment

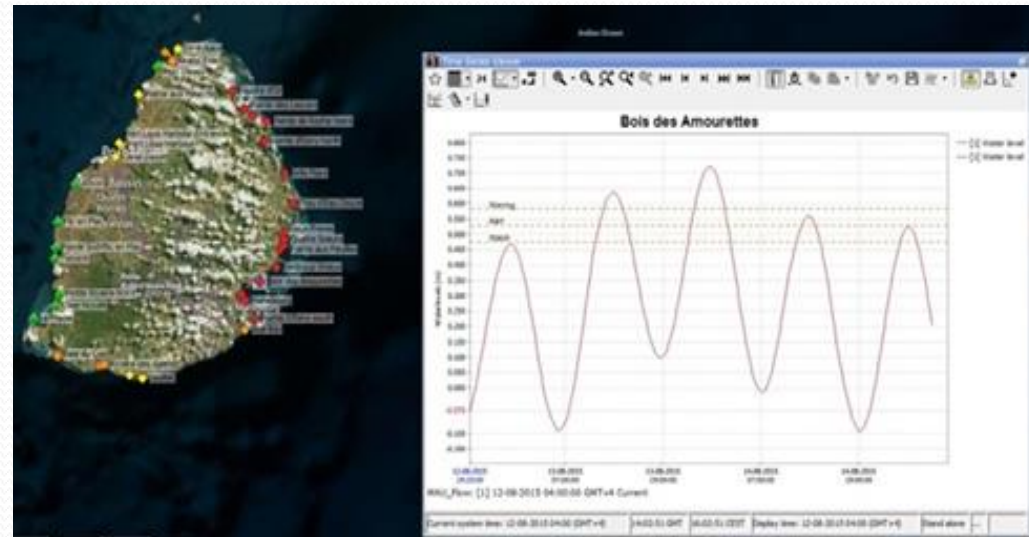
Coastal Adaptation

- JICA project: 2012 to 2015
 - salient findings: 17 % of the coast has been eroded and 27% of living corals in lagoon
 - Prepared of coastal conservation plans for 14 sites and carried out demonstration projects at 2 coastal stretches.
- Structural measures:
 - Beach restoration at 5 sites (beach nourishment + dune restoration);
- Non-structural measures:
 - Coral farming: Rehabilitation of degraded reefs (3 sites in Mauritius and 2 sites in Rodrigues;
 - Enforcement: Minimum setback from high water mark increased from 15m to 30m for residential coastal development.



Coastal Adaptation (cont)

- Adaptation Fund Projects:
 - Construction of an Emergency Centre at Quatre Soeurs,
 - Mangroves Plantation in the region of Grand Sable
 - Training
 - Evacuation Drill Exercise
 - Evacuation Plan at Quatre Soeurs
 - Coastal Adaptation works at Riviere des Galets
 - Sensitisation of coastal Communities
 - Early Warning System for incoming Storm Surge in the Republic of Mauritius



Enhancing Community Resilience

- Community Disaster Response Programme (CDRP) –
 - Empower community members from vulnerable areas to take appropriate collective actions awaiting First Responders.
 - To train & equip a team of volunteers to respond in a crisis situation or imminent disaster ,give critical support to first responders and provide immediate assistance to victims. The training involves:
 - Fire safety;
 - Rope handling;
 - First Aid,
 - Water Rescue;
 - Basic Camp Management;
 - Team Building;
 - Sand Bagging.



Challenges

- Development of a Strategic Framework, Policy and Action Plan in line with the SFDRR
- Danger Zone Maps/Plans
- Improving Early Warning through real-times river-sensor network
- Production of high resolution DEM



Thank You

National Disaster Risk Reduction and Management Centre
Tel: (+230) 2073900 Fax: (+230) 2073927 Mob: (+230) 57296033

Email: disaster@govmu.org

Website: <http://environment.govmu.org/English/Pages/default.aspx>