

Climate Risks & Early Warning Systems

Berlin, October 28 2015

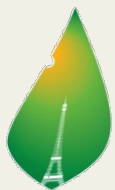
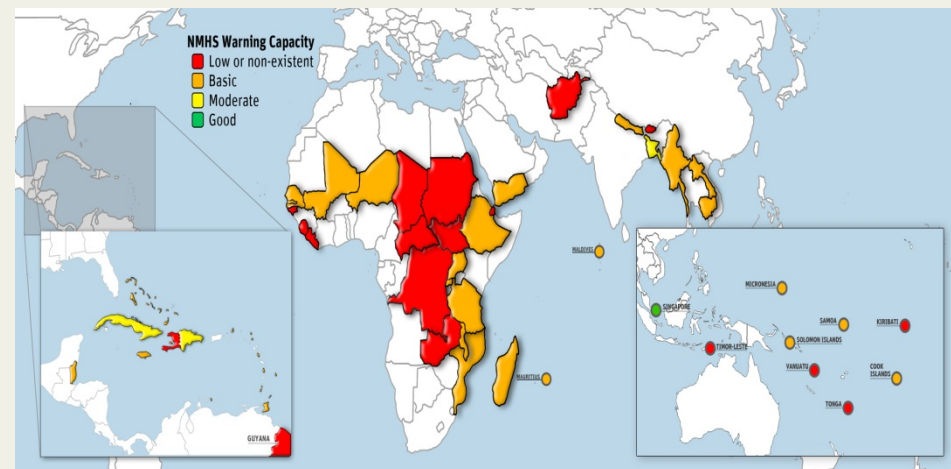
Early Warning System helps to adapt to climate impact

Benefits of EWS

- EWS helps to reduce **mortality** and **damages** to properties
- **314 billion** US\$ projected annual **loss** to national economies globally for disasters
- Extreme weather events are expected to be more **frequent** and more **intense** in the course of this century

Vulnerable countries lack of EWS

- In LDCs, SIDS & Africa :
 - About $\frac{3}{4}$ of countries have low or non existent or basic capacity to provide early warning
 - Only few countries have good capacity to provide early warning and risk information



Early Warning Systems are a strong demand from vulnerable countries

About 80% of INDCs from developing countries define EWS as a priority for adaptation*

In LAC, 16 INDC over 21 include EWS as a priority

In Africa and M-E,
36 INDC over 47
include EWS as a
priority

**Base on the INDCs published before October 2, 2015*

In Asia and Pacific,
100% of include
EWS as a priority

The **CREWS** initiative objectives

The CREWS initiative aims to

- **significantly increase the capacity for seamless MHEWS**, to generate and communicate effective impact-based early warnings, and risk information for hazardous hydro-meteorological and climate events **to protect lives, livelihoods, and properties** in LDCs and SIDS.

A result-based approach :

- By 2020, **all relevant SIDS and LDCs** have at least moderate **EWS** and risk information capacities

CREWS will contribute to the DRR Sendai Framework adopted in March 2015

The Sendai Framework stresses the need to
« *Substantially increase the availability of and access to multi-hazard early warning systems and disaster risk information and assessments to the people by 2030.* »



The **CREWS** partners

CREWS put together all relevant international organization

- To avoid duplication of work and to act efficiently and promptly, CREWS is supported by :



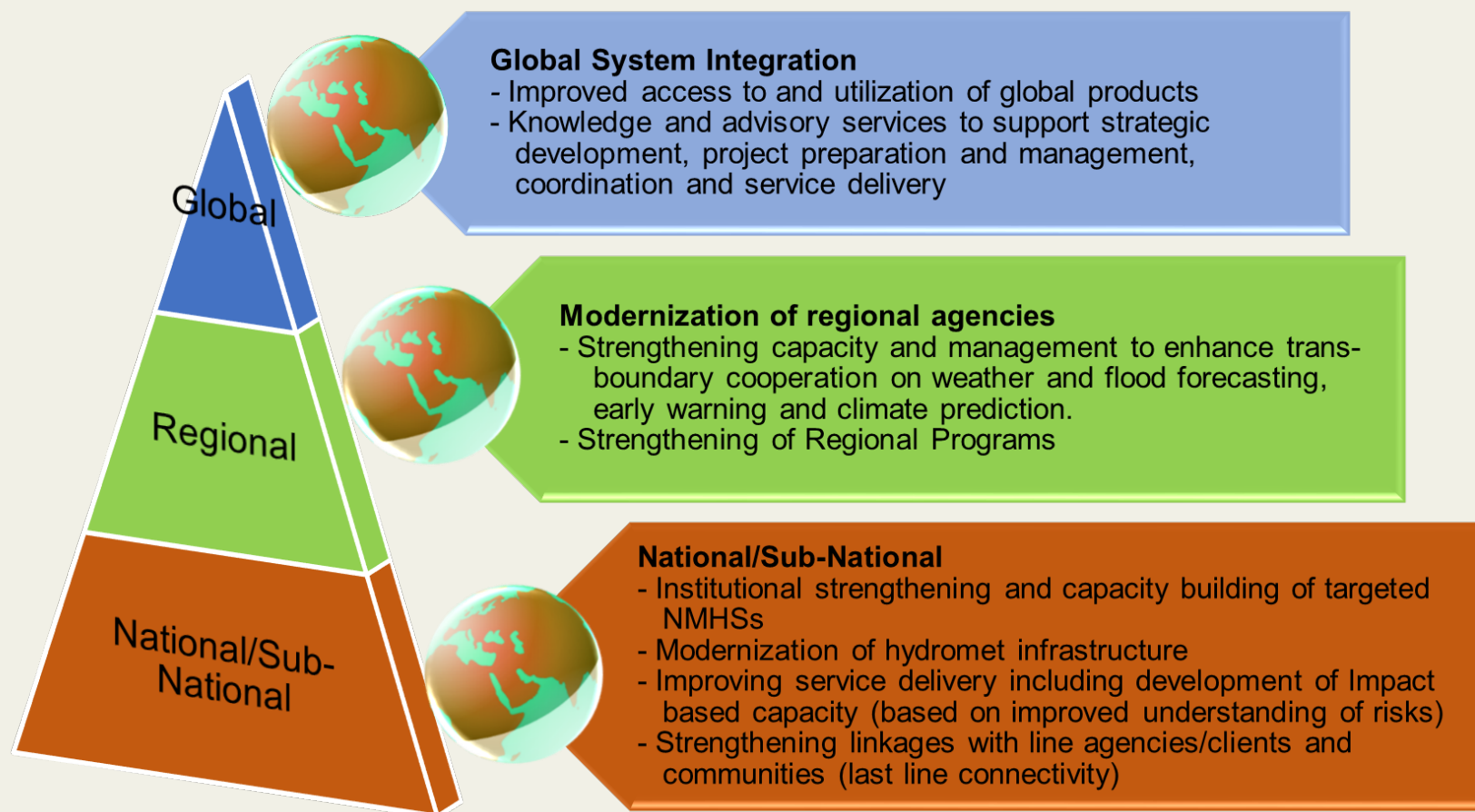
support **global and regional WMO centers** and to promote coordination and alignment with national initiatives;

ensure policy coherence, and adherence to the UN Plan of Action and International Sendai Framework Target;

identification, design and implementation support to **large scale programs at national level**, as well as coordination and alignment of these programs with regional and global centers



CREWS action plan in a nutshell



The **CREWS** initiative design

A **basket fund** to fill the EWS gaps

- A Basket Fund, hosted by World Bank will support the development of implementing institutions and organisations and their activities :

A robust needs analysis led by GFDRR, WMO & UNISDR shows that **100 millions** by 2020 is needed to reach the CREWS' objectives

CREWS governance

